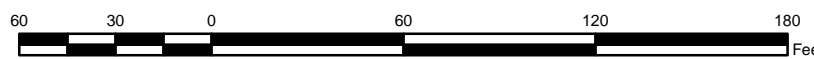


Legend

- Handicap Symbol White
- Painted Island White
- CrossWalk
- Painted White Line
- Single Yellow Line
- Stop Bar
- Yellow Curb
- Buildings
- Paved Road
- Paved Surface
- Unpaved Surface
- Vegetation
- parcels
- Town Owned Property

Groton Police Station

DATE: May 18, 2005



1 inch equals 60 feet

PAVEMENT MARKING SUMMARY

| Pavement Marking Type | Count |
|----------------------------|-------|
| Regular Parking Spaces | 116 |
| Handicapped Parking Spaces | 6 |
| Painted Islands | 9 |
| Painted Arrows | 0 |
| Handicapped Symbols | 6 |
| Painted Yellow Curb | 3 |

Disclaimer:

Planimetric and Topographic information depicted on this map was compiled by EarthData International and is based on an aerial flight performed in April 1999. Real property information has been derived from recorded deeds, plats, public records, and other data. The intent of this map is to depict a graphical representation of property information relative to planimetric features and is subject to change as a more accurate survey may disclose. The Town of Groton and the mapping company assume no legal responsibility for the information depicted on this map. IT IS NOT TO BE USED FOR THE TRANSFER OF PROPERTY.

Horizontal Datum is based on North American Datum of 1983 (NAD 83). Vertical Datum is based on National Geodetic Vertical Datum of 1988 (NGVD 29).

