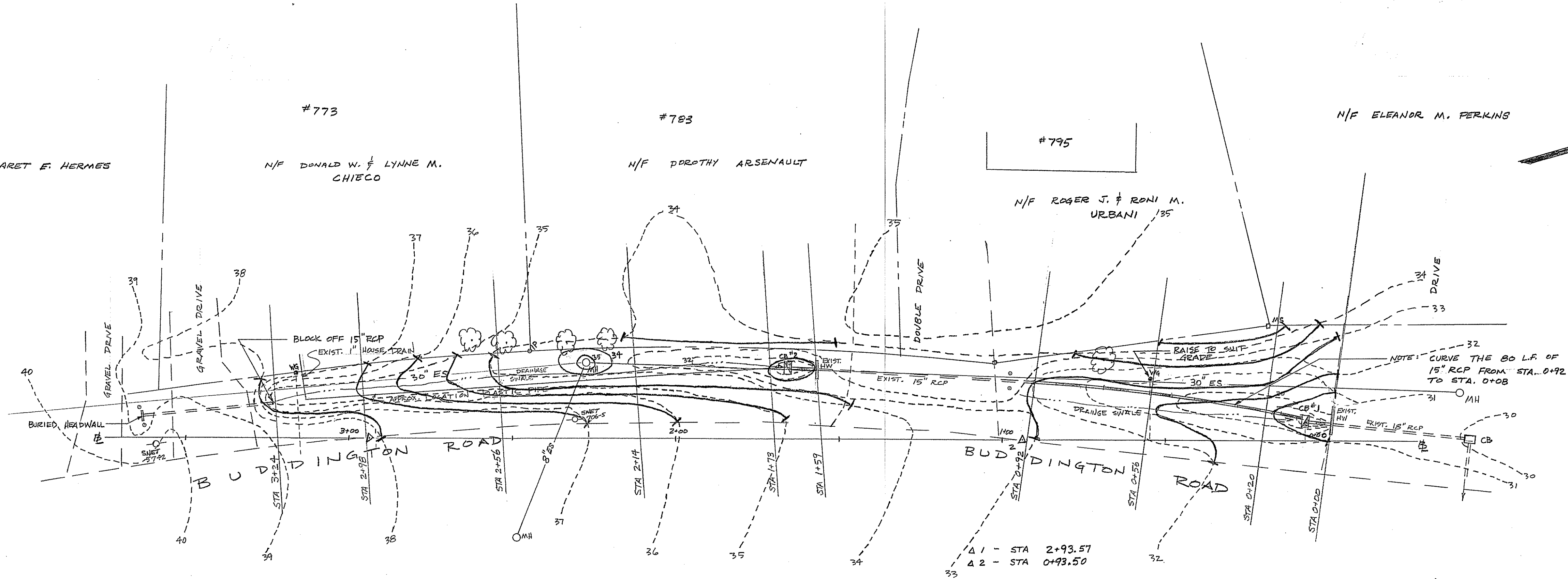


LEGEND

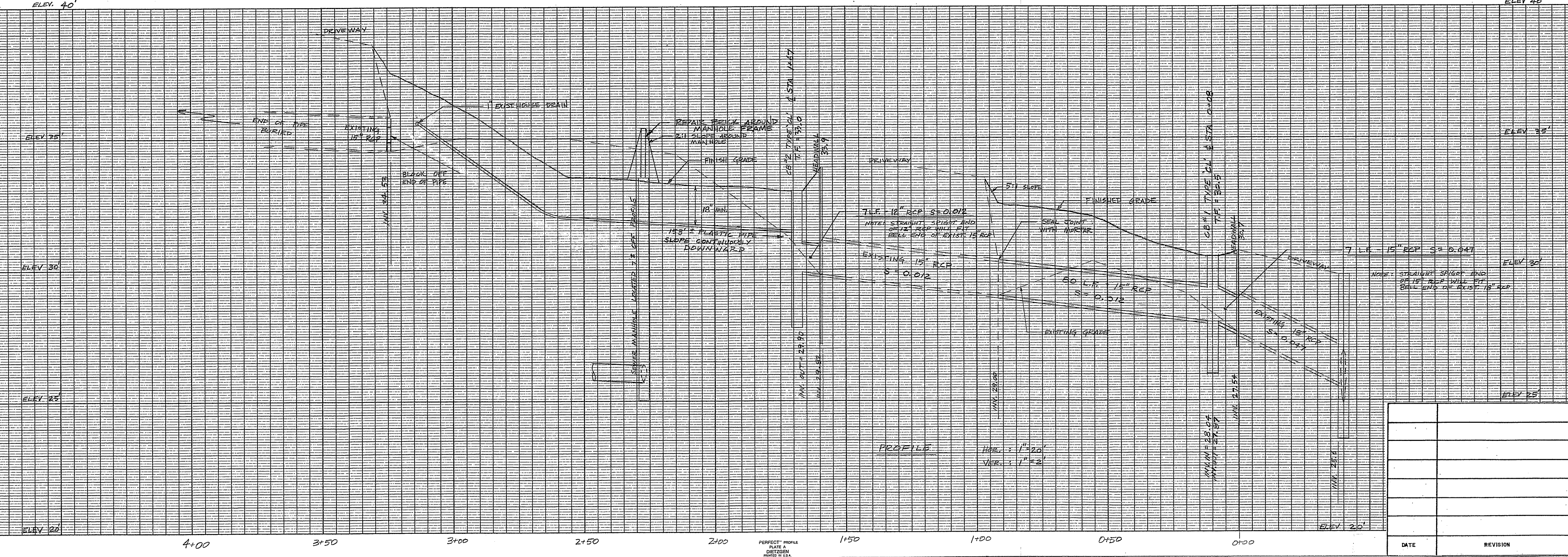
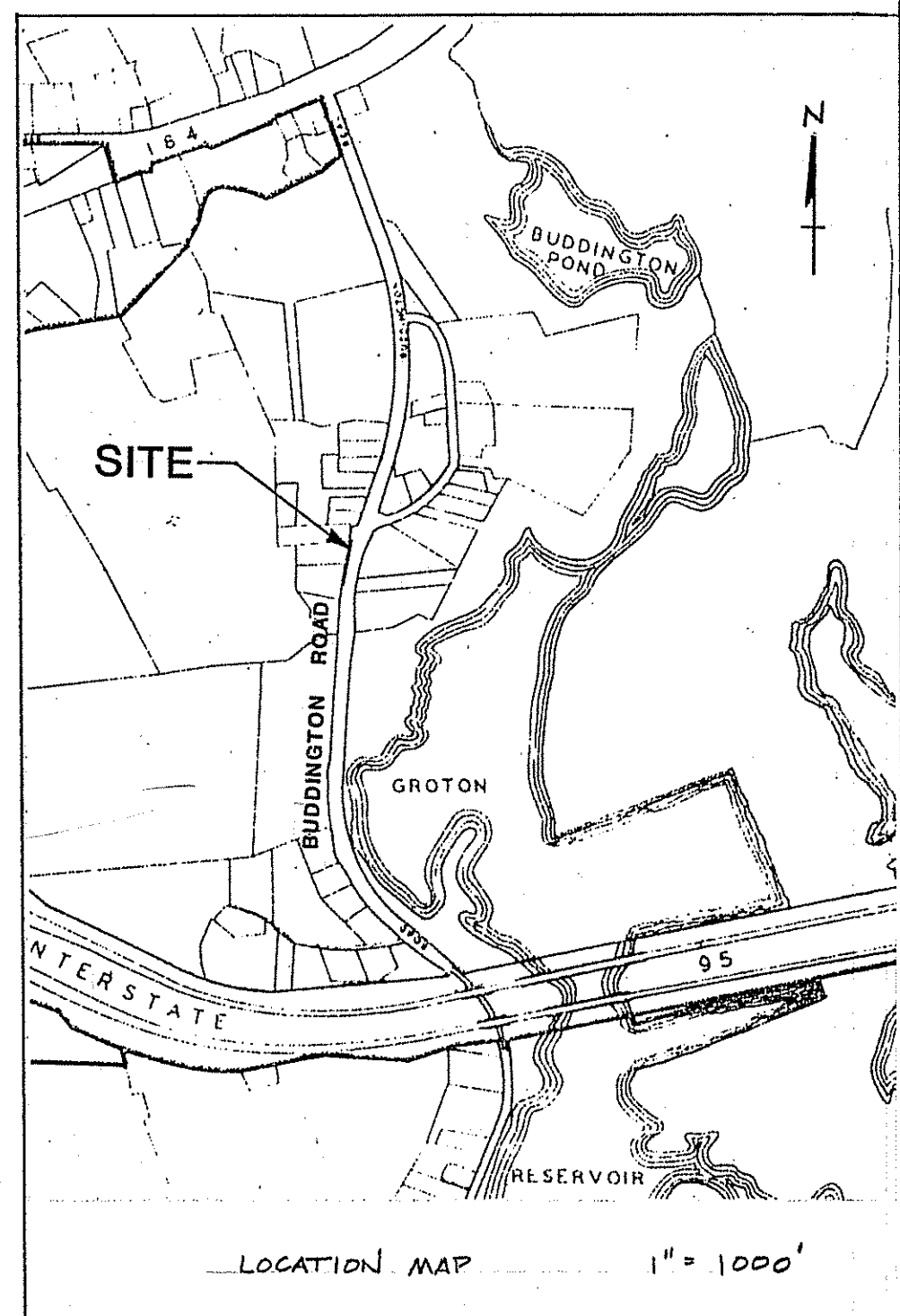
- PROPERTY LINE
- - - EDGE OF PAVEMENT
- ▬▬▬ PROP. CATCH BASIN W/ RCP N/F MARGARET E. HERMES
- ▬▬▬ EXIST. CATCH BASIN W/ RCP
- MH 8" ES EXIST. SANITARY SEWER
- UTILITY POLE
- ☁ TREE
- WG WATER GATE
- GUIDE RAIL POST
- EXIST. CONTOURS (1')
- PROPOSED CONTOURS (1')

NOTES

1. SLOPE RIGHTS TO BE ACQUIRED FROM D. ARSENAULT.
2. CATCH BASINS TO BE CONSTRUCTED FROM:
 - a) 24" PRECAST SUMP
 - b) PRECAST RISER OR BLOCKS
 - c) PRECAST REDUCER
 - d) PRECAST TOP
3. CALL "CALL BEFORE YOU DIG" (1-800-922-4455) 48 HRS. PRIOR TO CONSTRUCTION.
4. THE SLOPE OF 0.012 IS EQUAL TO 1 1/8" PER 8'.
5. INSTALL HAY BALES AT CATCH BASINS DURING CONSTRUCTION AND MAINTAIN UNTIL SLOPES ARE STABILIZED.
6. BACKFILL WITH COMPACTED BANK RUN GRAVEL AND INSTALL 4" OF LOAM OVER THE FILL AND DISTURBED AREAS. SEED THE LOAM.



PLAN SCALE: 1" = 20'



PROFILE HORIZ. : 1" = 20'
VERT. : 1" = 2'

TOWN OF GROTON			
DEPARTMENT OF PUBLIC WORKS			
BUDDINGTON ROAD			
DRAINAGE AND FILL AREAS - HSE #773-795			
DATE	SCALE	DESIGNED BY	DRAWN BY
JULY 1989	1" = 20'	GAH	GAH
DESIGN BY	REVIEWED	APPROVED	
GAH			
APPROVAL DATE	PROJECT NUMBER	PAGE	
	89-0910	1 OF 2	