

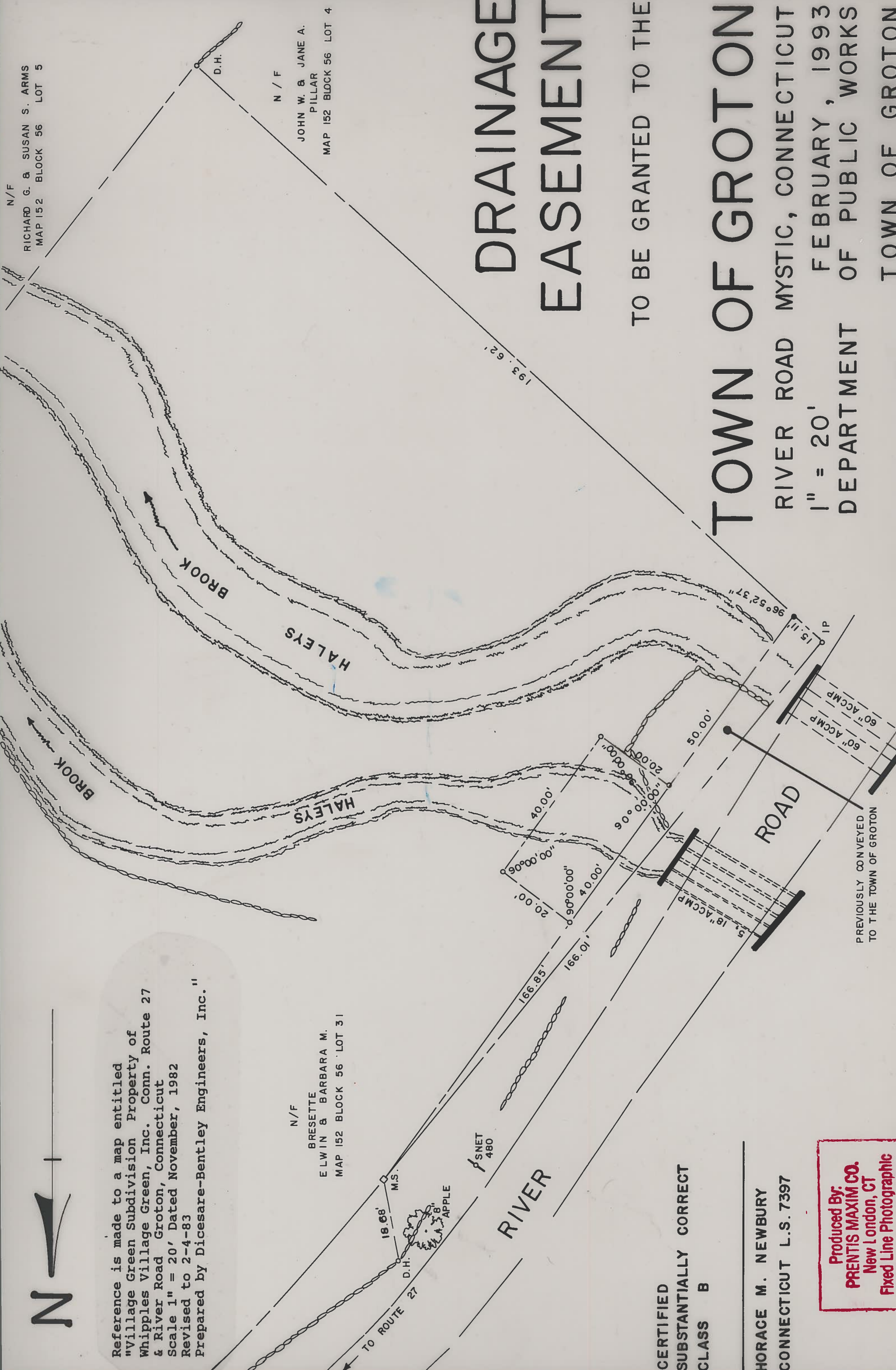


Reference is made to a map entitled "Village Green Subdivision Property of Whipples Village Green, Inc. Conn. Route 27 & River Road Groton, Connecticut Scale 1" = 20' Dated November, 1982 Revised to 2-4-83 Prepared by Dicesare-Bentley Engineers, Inc."

N / F
BRESETTE
ELWIN & BARBARA M.
MAP 152 BLOCK 56 LOT 31

N / F
JOHN W. & JANE A.
PILLAR
MAP 152 BLOCK 56 LOT 4

N / F
RICHARD G. & SUSAN S. ARMS
MAP 152 BLOCK 56 LOT 5



DRAINAGE EASEMENT

TO BE GRANTED TO THE

TOWN OF GROTON

RIVER ROAD MYSTIC, CONNECTICUT
1" = 20'
DEPARTMENT OF PUBLIC WORKS

FEBRUARY, 1993
TOWN OF GROTON

CERTIFIED
SUBSTANTIALLY CORRECT
CLASS B

HORACE M. NEWBURY
CONNECTICUT L.S. 7397

Produced By:
PRENTIS MAXIM CO.
New London, CT
Fixed Line Photographic

PREVIOUSLY CONVEYED
TO THE TOWN OF GROTON