

GENERAL NOTES

- SEE STRUCTURE SHEETS FOR ALL RETAINING WALL AND STRUCTURE DETAILS.
- THE DEBRIS TO BE REMOVED SHALL CONSIST OF ROADWAY MATERIALS (IE: PAVEMENT, SUBBASE, FILL, SAND). REMOVAL LIMITS SHALL BE AS SHOWN OR AS DIRECTED BY THE ENGINEER. EQUIPMENT ACCESS TO THE DEBRIS SHALL BE THROUGH THE WASHED-OUT EMBANKMENT. DEBRIS REMOVAL TO BE PAID FOR UNDER PAY ITEM "REMOVAL OF ROADWAY DEBRIS". SEE SPECIAL PROVISIONS.
- THE EXPOSED TOPSOIL WHERE DEBRIS HAS BEEN REMOVED SHALL BE SEEDED WITH "NEW ENGLAND CONSERVATION/WILDLIFE MIX" SUPPLIED BY NEW ENGLAND WETLAND PLANTS, INC. (OR APPROVED EQUAL). THE AREA SHALL BE MULCHED WITH STRAW. WORK TO BE PAID FOR UNDER THE ITEM "ESTABLISHMENT OF WETLAND VEGETATION"
- FLOOD BOUNDARIES SHOWN ARE APPROXIMATE BASED UPON THE CURRENT FEMA FLOOD INSURANCE RATE MAP. (COMMUNITY PANEL 090097 0011 C - REV. AUGUST 15, 1984) THE 100 YEAR FLOOD BOUNDARY SHOWN EAST OF RIVER ROAD IS BASED UPON THE PUBLISHED ELEVATION OF 10' AS SHOWN ON THE SAME MAP.
- THE TEMPORARY PRECAST CONCRETE BARRIER CURBING AND SAND BARRELS CURRENTLY IN PLACE MAY BE USED BY THE CONTRACTOR DURING CONSTRUCTION BUT SHALL REMAIN THE PROPERTY OF THE TOWN AFTER CONSTRUCTION.

REV.	DATE	REVISION DESCRIPTION	SHEET NO.


Plotted Date: 04/15/11

DESIGNER/DRAFTER: **MGF**

CHECKED BY: **JAK**

SCALE IN FEET

SCALE 1"=20'




TOWN OF GROTON, CT

Filename: HW_MSH.010.130_PLN-01.dgn

SIGNATURE/BLOCK:

CONSULTING ENGINEERS



PURCELL ASSOCIATES

PROJECT TITLE:

RECONSTRUCTION OF RIVER ROAD

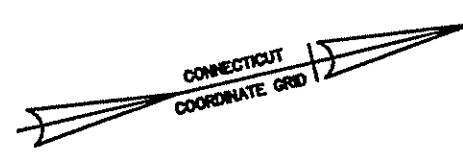
TOWN: **GROTON**

DRAWING TITLE: **ROADWAY PLAN**

PROJECT NO. **010-0130**

DRAWING NO. **PLN-01**

SHEET NO. **1**



GENERAL NOTES

SPECIFICATIONS: CONNECTICUT DEPARTMENT OF TRANSPORTATION FORM 816 (2004), SUPPLEMENTAL SPECIFICATIONS DATED JULY 2010 AND SPECIAL PROVISIONS.

DESIGN SPECIFICATIONS: AASHTO LRFD DESIGN SPECIFICATIONS, 2010, 4TH ED. WITH INTERIM SPECIFICATIONS UP TO AND INCLUDING 2010, AS SUPPLEMENTED BY THE CONNECTICUT DEPARTMENT OF TRANSPORTATION BRIDGE DESIGN MANUAL (2003).

ALLOWABLE DESIGN STRESSES:
REINFORCEMENT (ASTM A615 GRADE 60) $F_y = 60,000$ PSI

LIVE LOAD: HL 93 (APPLIES TO CULVERT RELINING)

FUTURE PAVING ALLOWANCE: NONE

BITUMINOUS CONCRETE OVERLAY: REFER TO DRAWING NO. TYP-01 FOR PAVEMENT DETAILS.

DIMENSIONS: ALL ELEVATIONS ARE GIVEN IN FEET, WHEN ELEVATIONS ARE GIVEN TO LESS THAN THREE DECIMAL PLACES, THE OMITTED DIGITS SHALL BE ASSUMED TO BE ZEROS.

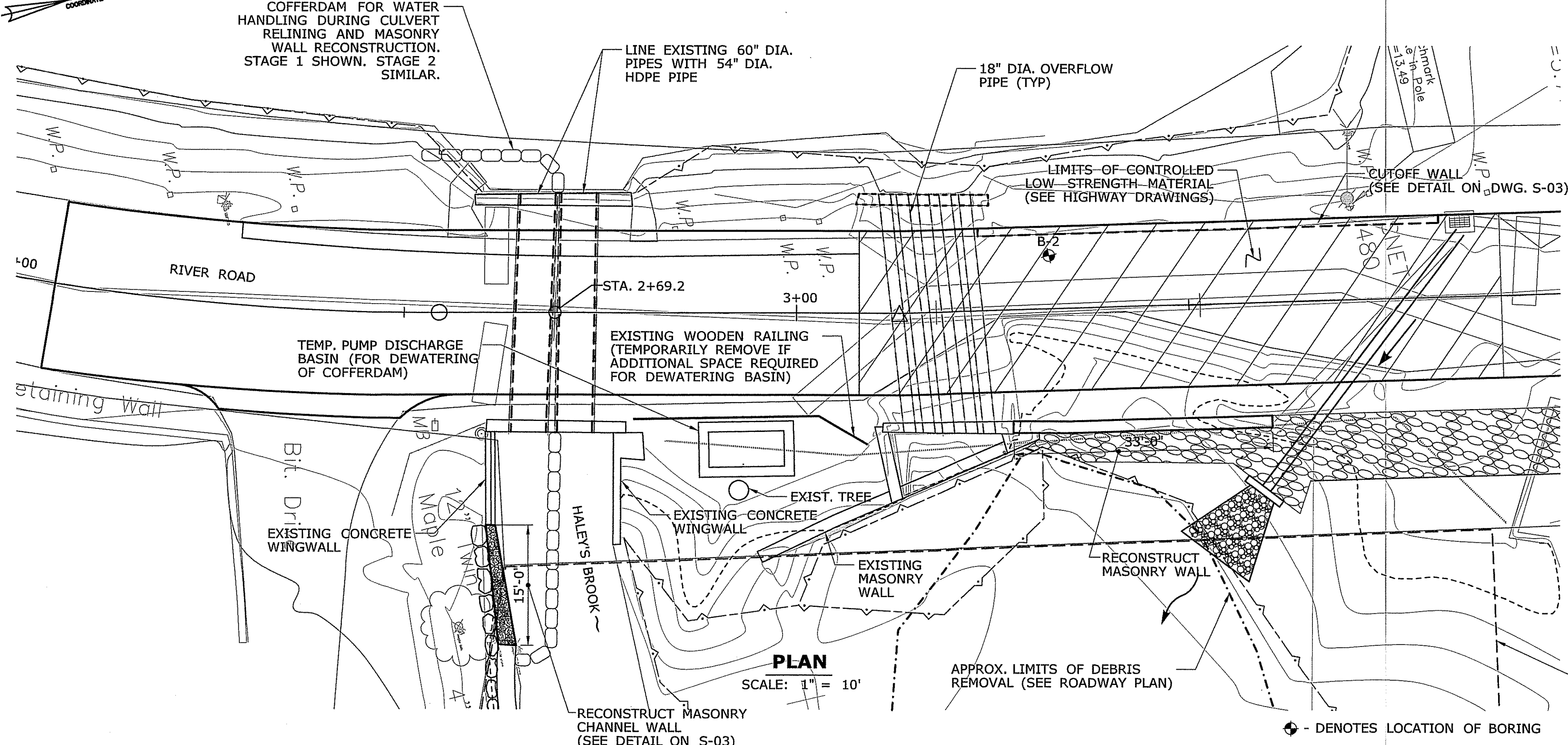
CONCRETE NOTES

CONCRETE COVER: ALL REINFORCEMENT SHALL HAVE 2 INCH COVER UNLESS DIMENSIONED OTHERWISE.

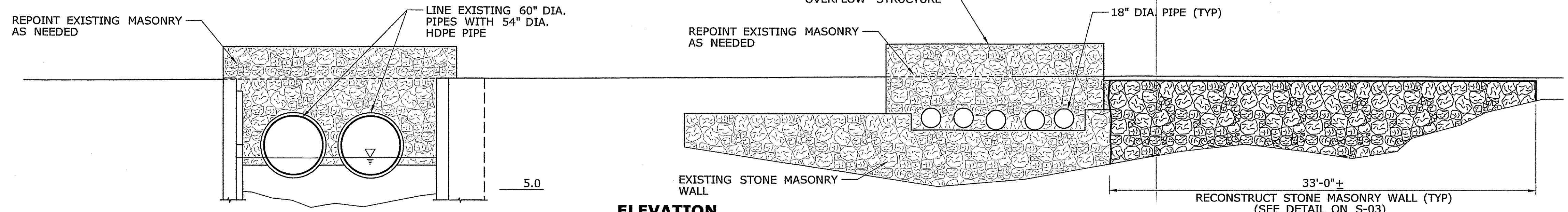
REINFORCEMENT: ALL REINFORCEMENT SHALL BE ASTM A615 GRADE 60.

EPOXY COATED REINFORCEMENT: ALL REINFORCEMENT SHALL BE EPOXY COATED.

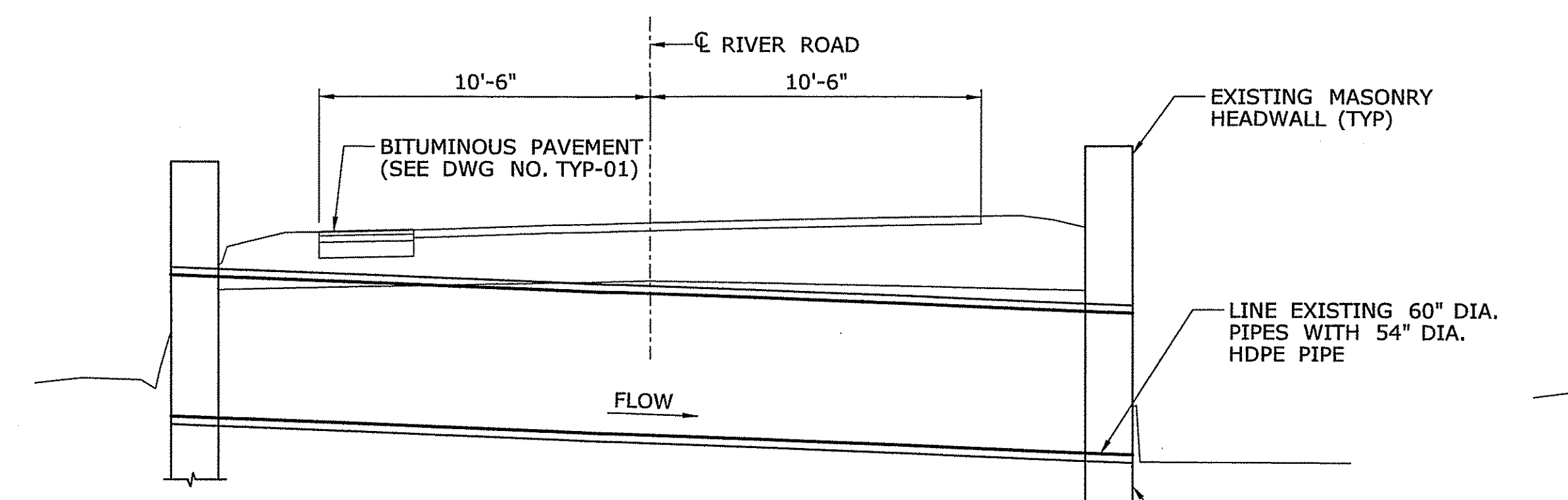
UTILITIES: THE CONTRACTOR SHALL PROTECT ALL EXISTING UTILITIES LOCATED WITHIN THE VICINITY OF THE CONSTRUCTION SITE. ALL WORK RELATED TO UTILITY RELOCATION, TEMPORARY UTILITY RELOCATION AND UTILITY SUPPORTS SHALL BE COORDINATED WITH THE RESPECTIVE UTILITY COMPANIES (SEE SPECIAL PROVISIONS). FOR LOCATION OF ALL UTILITY POLES AND LINES, SEE UTILITY RELOCATION PLANS.



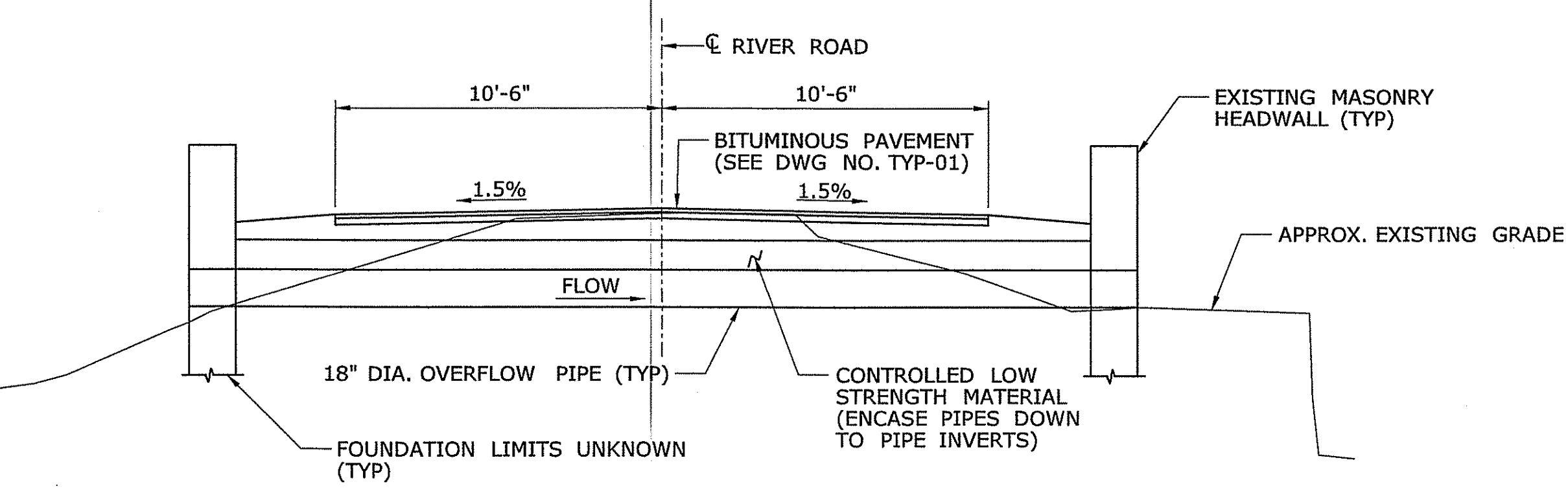
PLAN
SCALE: 1" = 10'



ELEVATION
SCALE: 1" = 5'



SECTION @ TWO PIPE CULVERT
SCALE: 1/4" = 1'-0"




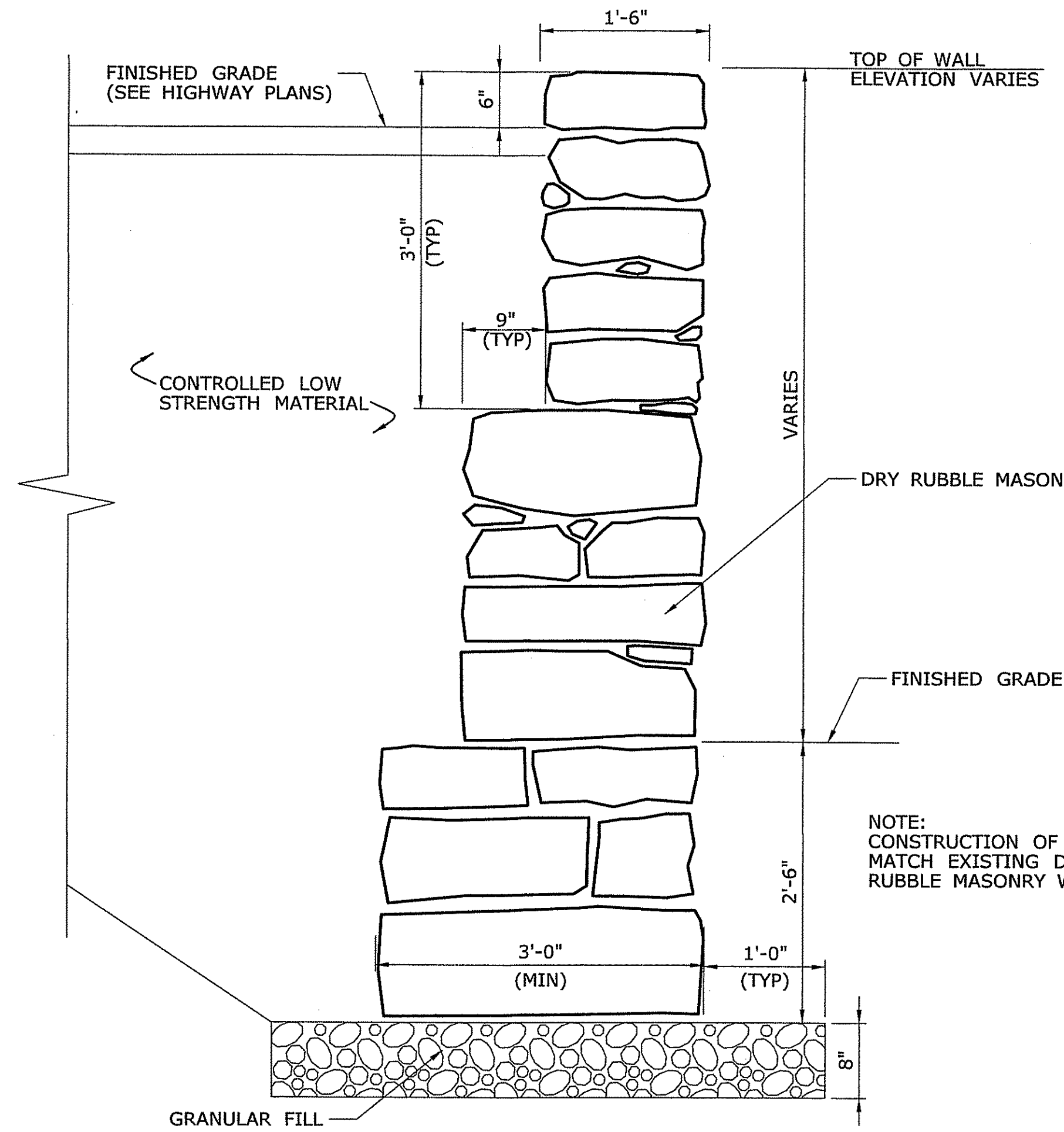
SECTION @ OVERFLOW STRUCTURE
SCALE: 1/4" = 1'-0"

NOTICE TO BRIDGE INSPECTORS

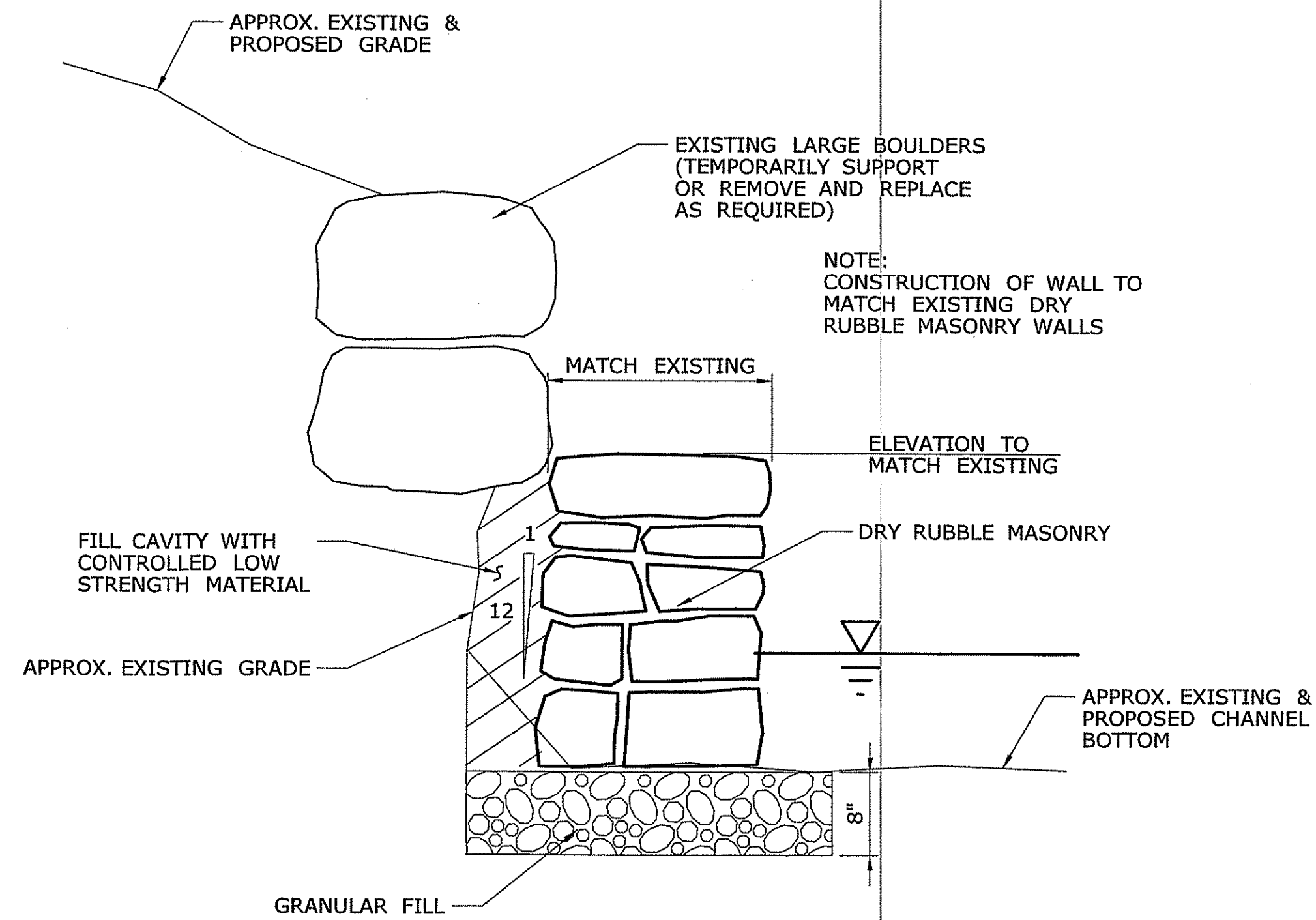
THE DEPARTMENT'S BRIDGE SAFETY PROCEDURES REQUIRE THIS BRIDGE TO BE INSPECTED FOR, BUT NOT LIMITED TO, ALL APPROPRIATE COMPONENTS INDICATED IN THE GOVERNING MANUALS FOR BRIDGE INSPECTION. ATTENTION MUST BE GIVEN TO INSPECTING THE FOLLOWING SPECIAL COMPONENTS AND DETAILS. (THE LISTING FOR COMPONENTS FOR SPECIFIC ATTENTION SHALL NOT BE CONSTRUED TO REDUCE THE IMPORTANCE OF INSPECTION OF ANY OTHER COMPONENT OF THE STRUCTURE.) THE FREQUENCY OF INSPECTION OF THIS STRUCTURE SHALL BE IN ACCORDANCE WITH THE GOVERNING MANUALS FOR BRIDGE INSPECTION, UNLESS OTHERWISE DIRECTED BY THE MANAGER OF BRIDGE SAFETY AND EVALUATION.

COMPONENT OR DETAIL	STRUCTURE SHEET REFERENCE
N/A	N/A

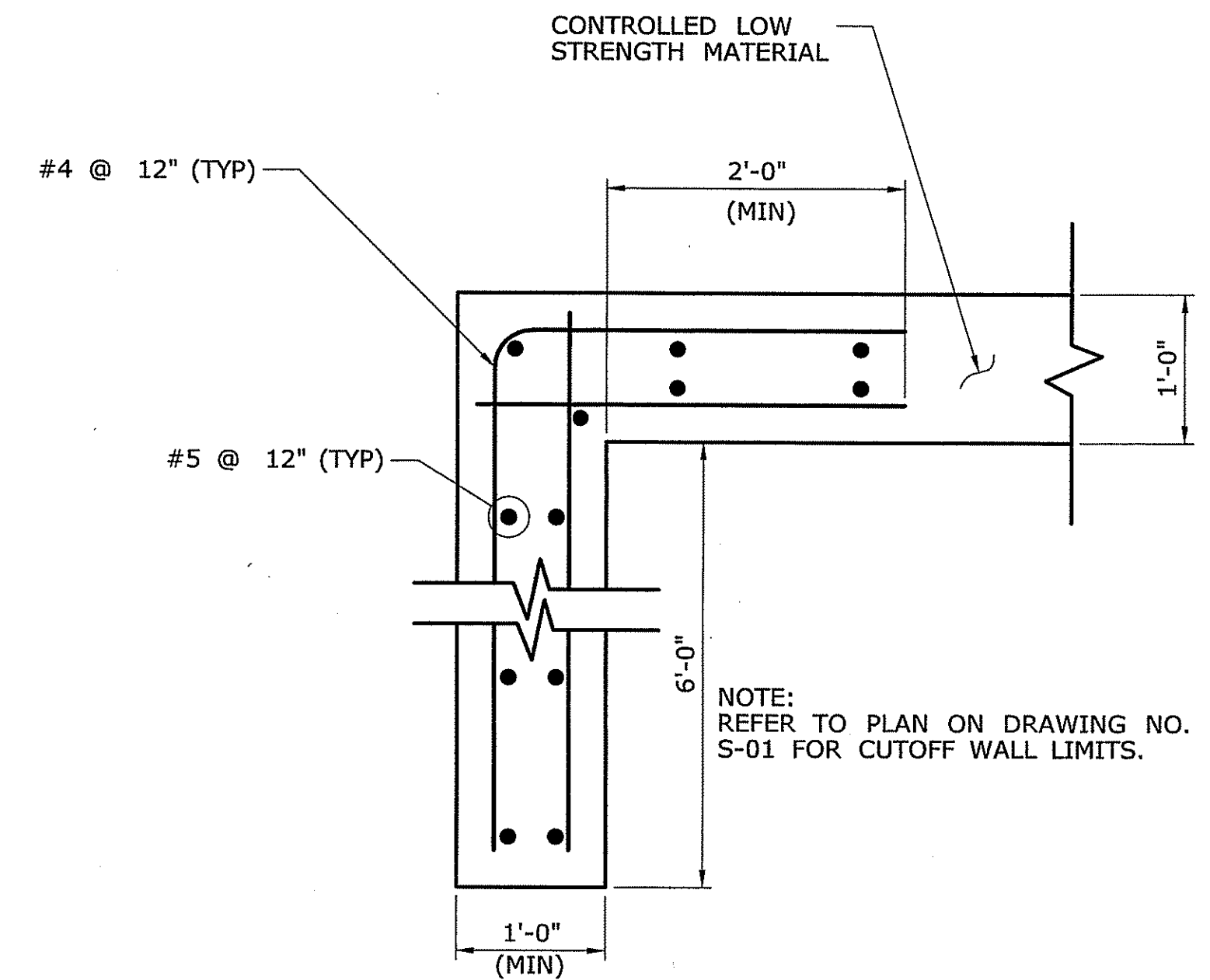
THE INFORMATION, INCLUDING ESTIMATED QUANTITIES OF WORK, SHOWN ON THESE SHEETS IS BASED ON LIMITED INVESTIGATIONS BY THE STATE AND IS IN NO WAY WARRANTED TO INDICATE THE CONDITIONS OF ACTUAL QUANTITIES OF WORK WHICH WILL BE REQUIRED.			DESIGNER/DRAFTER: SJD CHECKED BY: RBP SCALE AS NOTED	 TOWN OF GROTON, CT	SIGNATURE/ BLOCK: PURCELL ASSOCIATES	PROJECT TITLE: RIVER ROAD	TOWN: GROTON DRAWING TITLE: GENERAL PLAN	PROJECT NO. 010-0130 DRAWING NO. S-01 SHEET NO. 8
REV.	DATE	REVISION DESCRIPTION	SHEET NO.	Plotted Date: 04/15/2011	Filename: SB_MSH_GPN_010_0130.DWG			



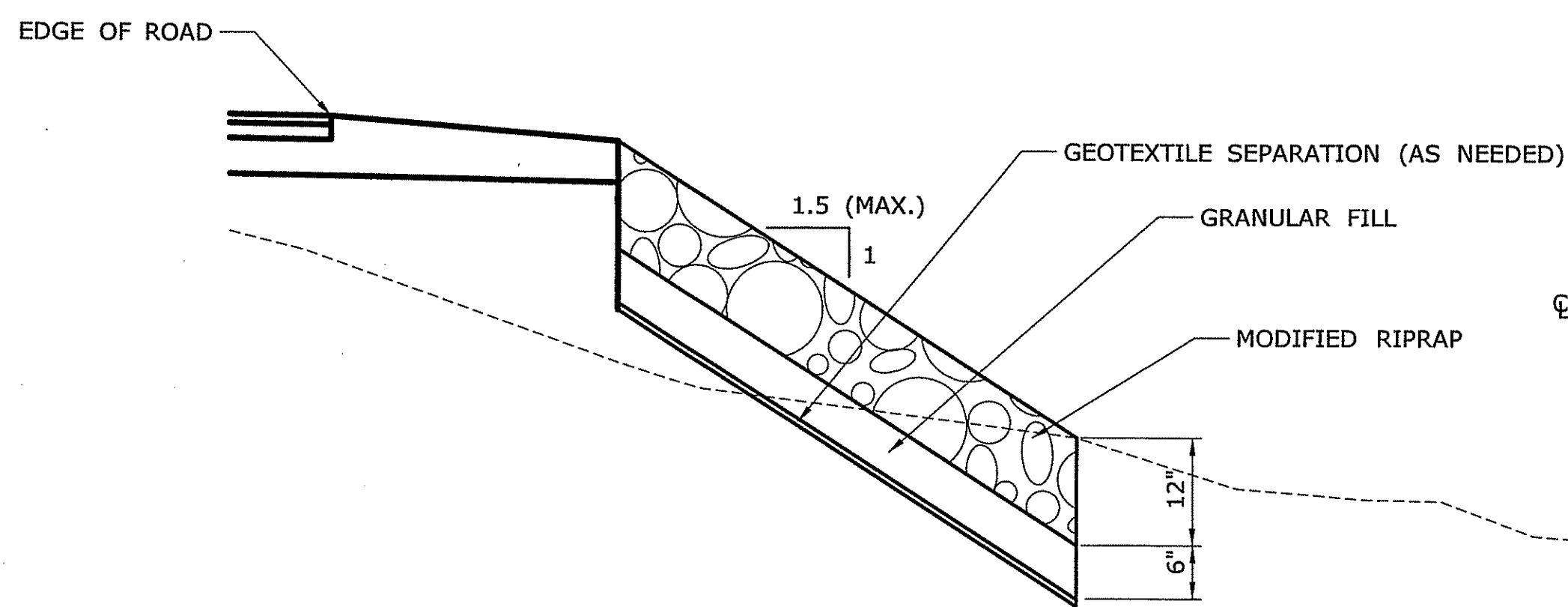
TYPICAL MASONRY WALL SECTION
NOT TO SCALE



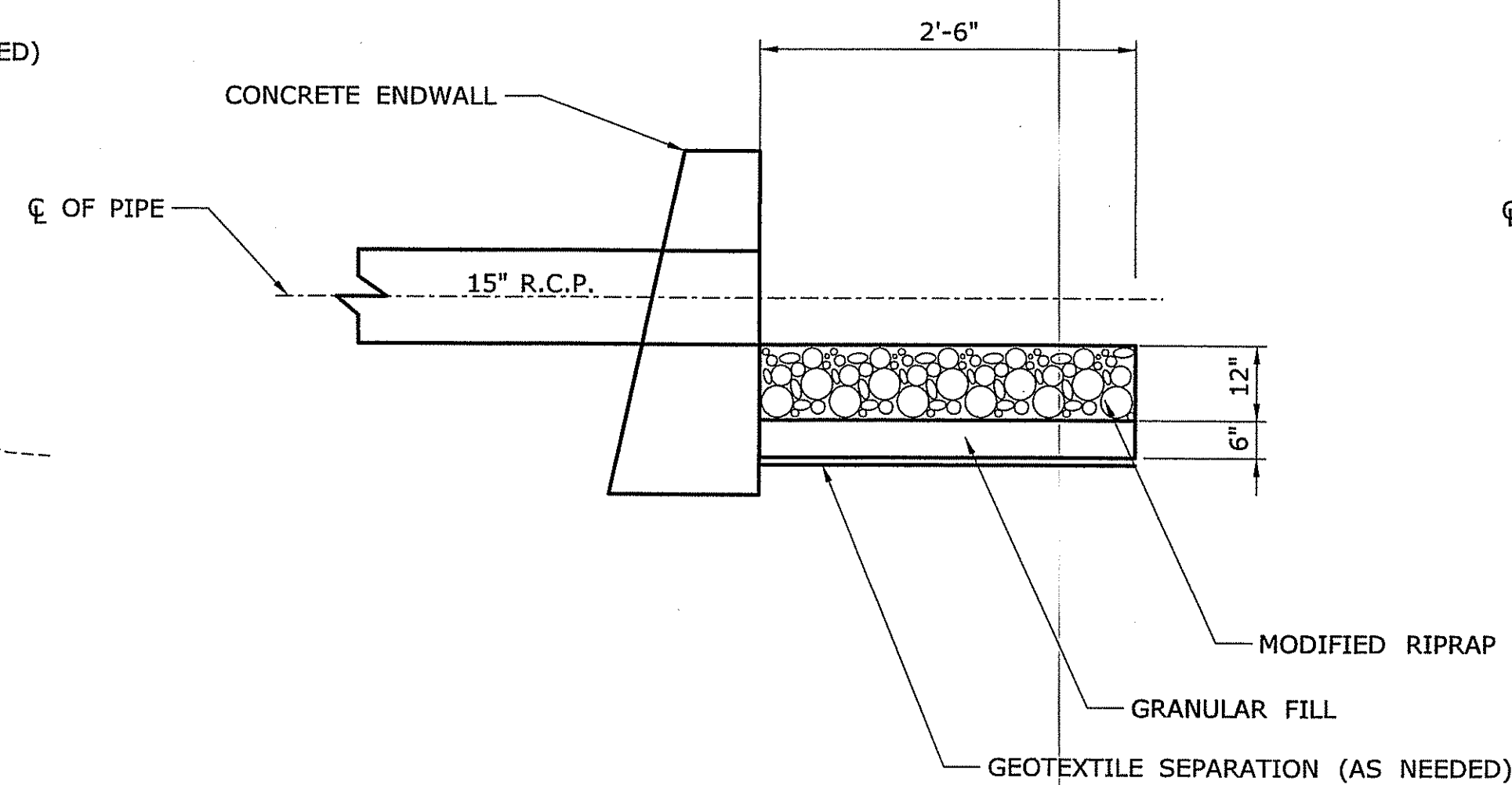
MASONRY CHANNEL WALL SECTION
SCALE: 1" = 1'-0"



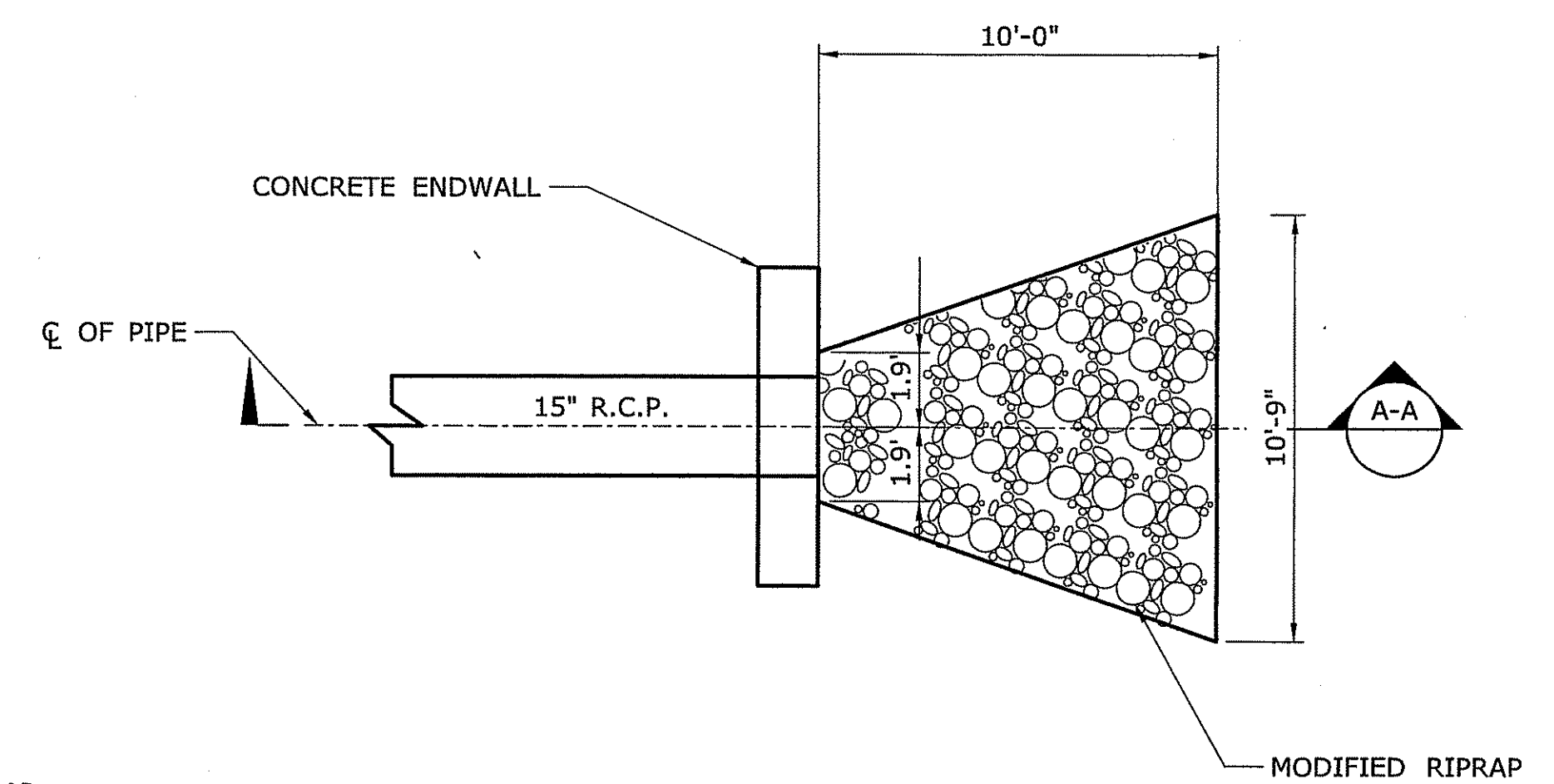
CUTOFF WALL DETAILS
SCALE: 1" = 1'-0"





MODIFIED RIPRAP EROSION PROTECTION DETAIL
N.T.S.



SPLASH PAD DETAIL-SECTION A-A
N.T.S.



SPLASH PAD DETAIL-PLAN
N.T.S.

DESIGNER/DRAFTER: SJD	 TOWN OF GROTON, CT	SIGNATURE/ BLOCK:  PURCELL ASSOCIATES	PROJECT TITLE: RIVER ROAD	TOWN: GROTON	PROJECT NO. 010-0130
CHECKED BY: RBP					DRAWING NO. S-03
SCALE AS NOTED	Filename: SB_MSH_010_0130_DET1.DWG			DRAWING TITLE: STRUCTURE DETAILS	SHEET NO. 10
REV. DATE REVISION DESCRIPTION SHEET NO.	Plotted Date: 04/15/11				