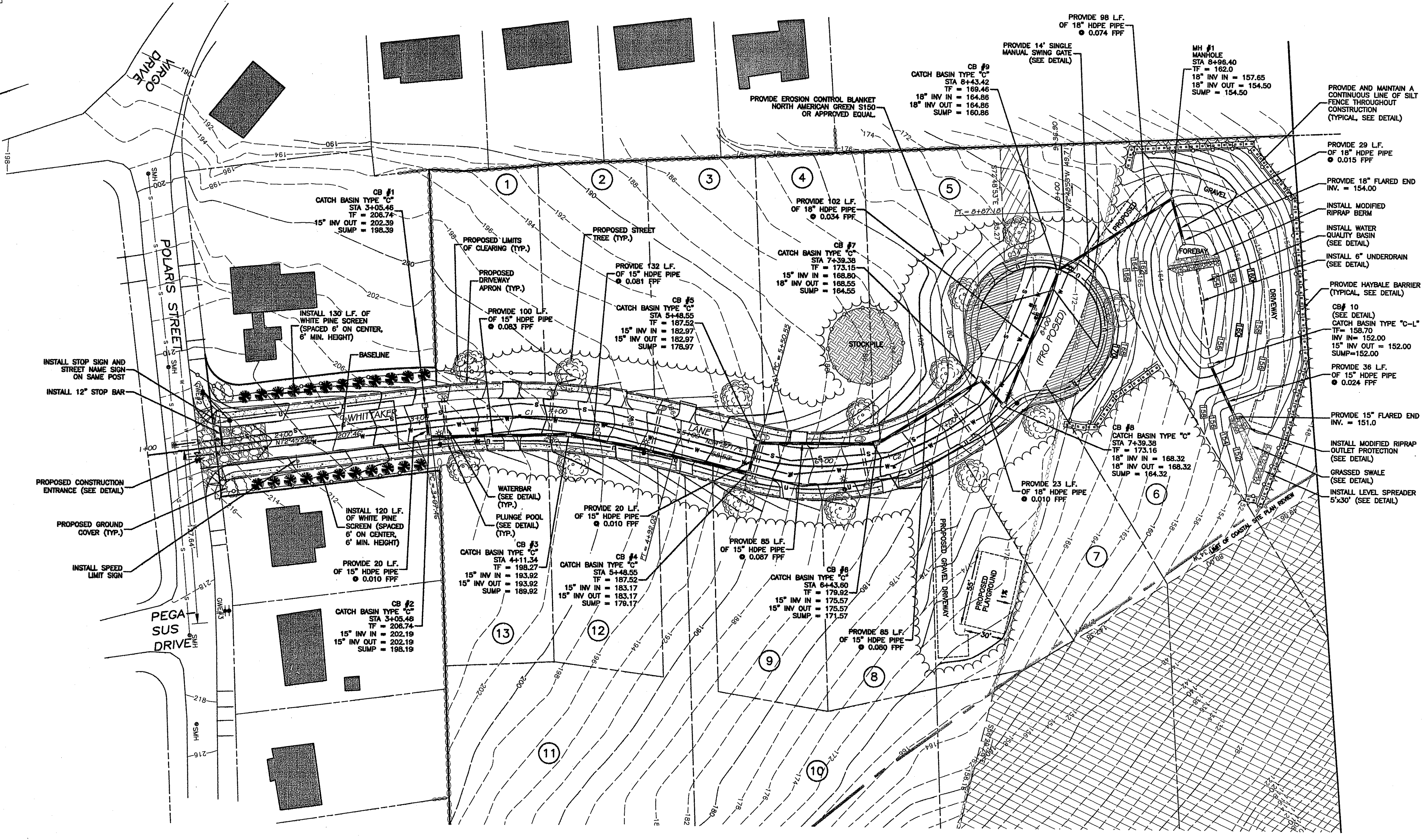


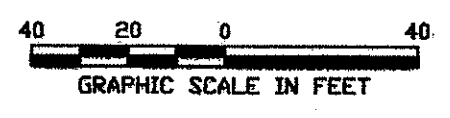
CURVE DATA			
C1			
	NORTHING	EASTING	
P.C.	9333.214	7986.506	
P.I.	9424.300	8007.127	
P.T.	9501.416	8059.807	
Δ	21°34'54"	T	93.39'
R	490.00'	L	184.57'
C2			
	NORTHING	EASTING	
P.C.	8549.739	8092.817	
P.I.	9751.162	8230.415	
P.T.	9823.236	7997.370	
Δ	107°09'10"	T	243.94'
R	180.00'	L	336.63'



MAGNETIC 04/2008

PLAN

QUALITY CONTROL CERTIFICATION		
GROUP	REVIEWED	DATE
PROJECT MANAGER	<i>[Signature]</i>	11/29/06
SURVEY	<i>[Signature]</i>	11/29/06
ENVIRONMENTAL		
CIVIL		
STRUCTURAL	<i>[Signature]</i>	11/29/06
ARCHITECTURAL		



TOWN OF GROTON PLANNING COMMISSION APPROVAL GRANTED DATE NOV 29 2006

FOR SIGNATURE: *[Signature]* 3 YEARS

COMMENTS:

JOB DATA		REVISIONS	
PROJECT	2006107 Windward Estates	NO.	DATE
BOOK NO.	4157,4158	1	09/07/2006
DESIGNED	NET, PC	2	09/14/2006
DRAWN	NET, PC	3	09/26/2006
CHECKED	NET	4	09/27/2006
FILE	2006107 PRF	5	10/19/2006
		6	11/01/2006
		7	11/09/2006
		8	11/13/2006
		9	11/15/2006
		10	11/15/2006
		11	02/01/2007

DATE: 05/04/2006

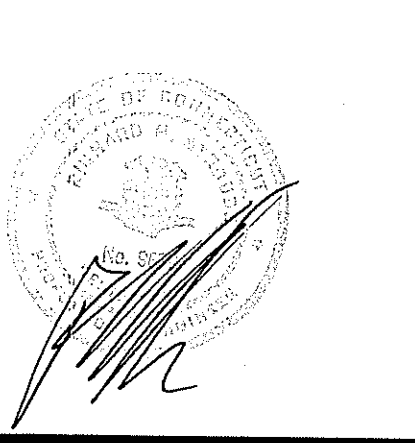
SCALE: 1" = 40'

SHEET 5 OF 12

CME Associates, Inc.
formerly GEANDLER, PALMER & KING

110 Broadway Norwich, CT 06860
Phone 866-264-3227
Fax 866-867-1601
www.cmeengineering.com

Consulting Engineering, Environmental Science & Surveying



SUBDIVISION PLAN
ZONING DISTRICT RS-12
PREPARED FOR
PEQUOT DEVELOPMENT ASSOCIATES LLC
POLARIS STREET
TOWN OF GROTON, CONNECTICUT

ROADWAY PLAN
WHITTAKER LANE

DEEP TEST PIT DATA:

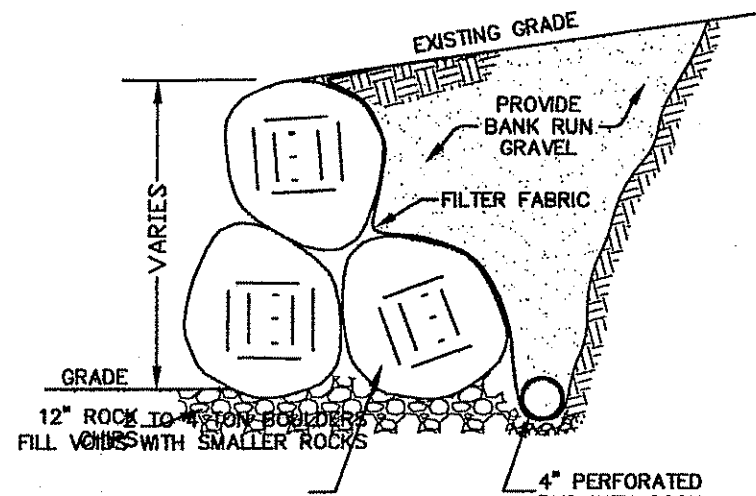
WITNESSED AND RECORDED BY GARY J. WNALSKO, PE ON SEPTEMBER 24, 2004

Table with columns for LOT, TOP SOIL, and DYS (Dark Yellow Brown Subsoil, Brown Sandy Gravel). Rows list lots 1 through 10B with corresponding soil types and restrictions.

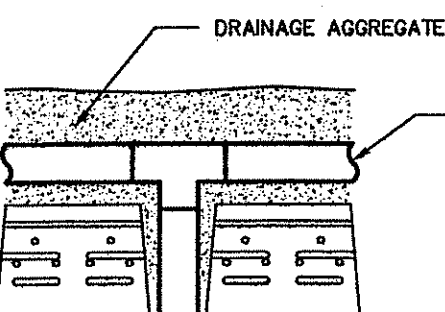
PERCOLATION TEST DATA:

PERMEABILITY TESTING BY GARY J. WNALSKO, PE ON SEPTEMBER 25, 2004

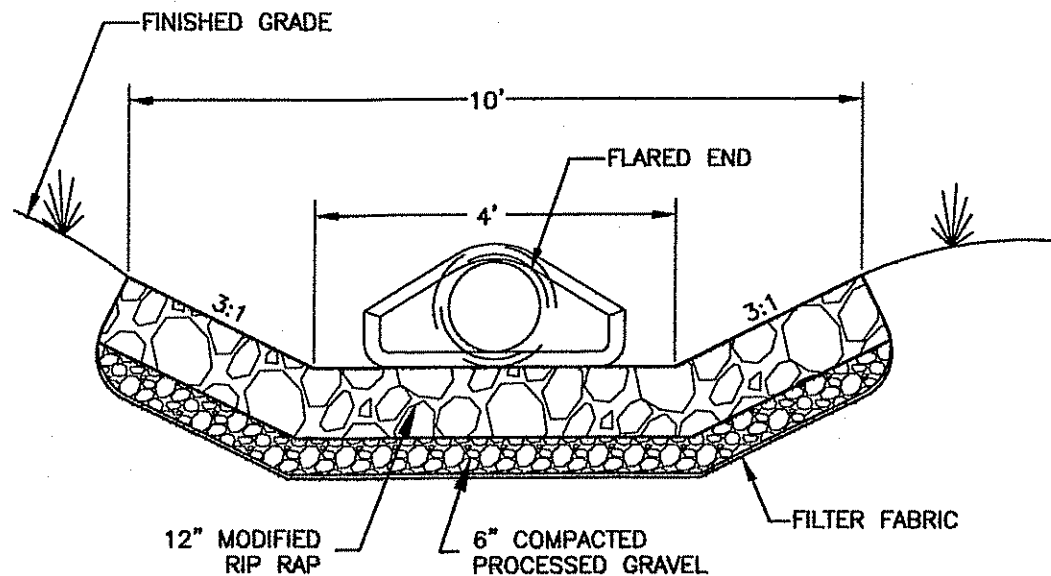
P1 BETWEEN LOTS #18 & #19 18 IN/HR @ 36" DEPTH
P2 BETWEEN LOTS #14 & #15 15 IN/HR @ 36" DEPTH
P3 BETWEEN LOTS #8 & #9 18 IN/HR @ 30" DEPTH
P4 BETWEEN LOTS #4 & #5 18 IN/HR @ 34" DEPTH
P5 ADJACENT TO R4 18 IN/HR @ 36" DEPTH



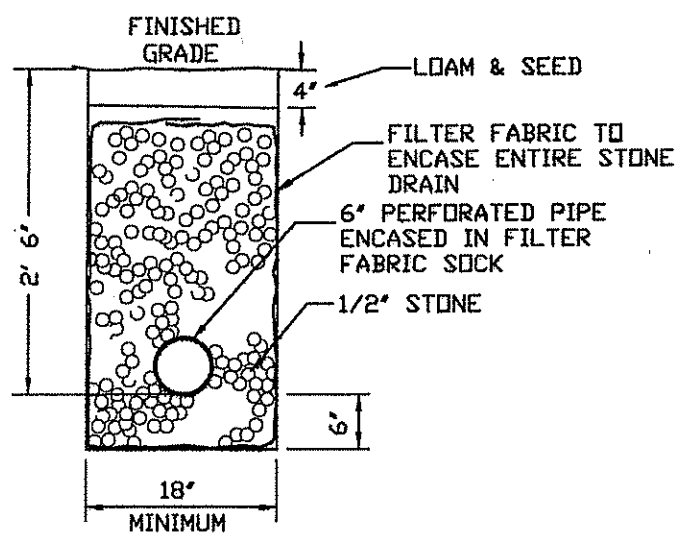
STONE RETAINING WALL
NOT TO SCALE



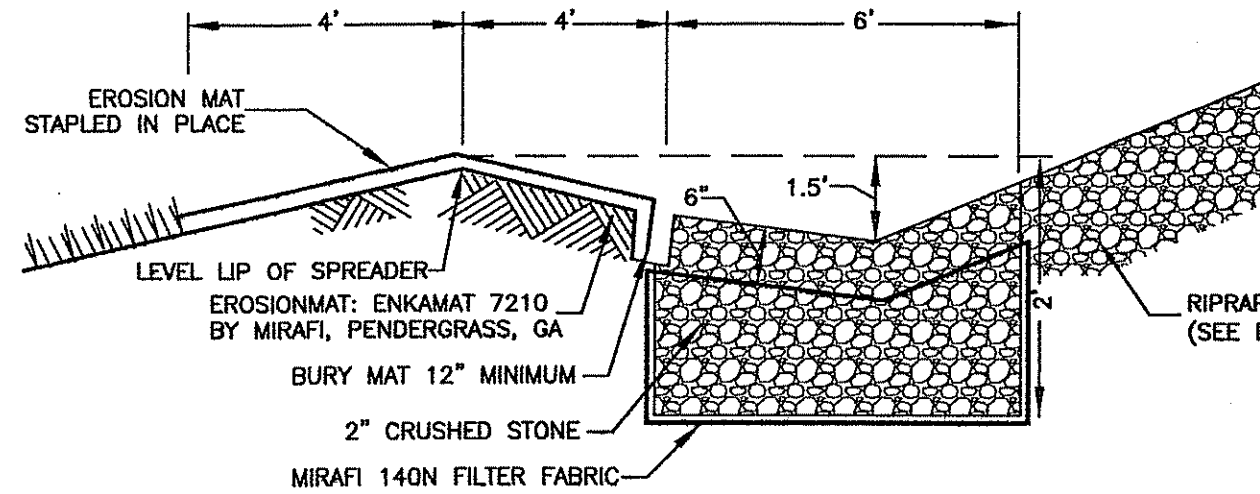
DRAIN DETAIL
WALLS OVER 4'



OUTLET PROTECTION
NOT TO SCALE



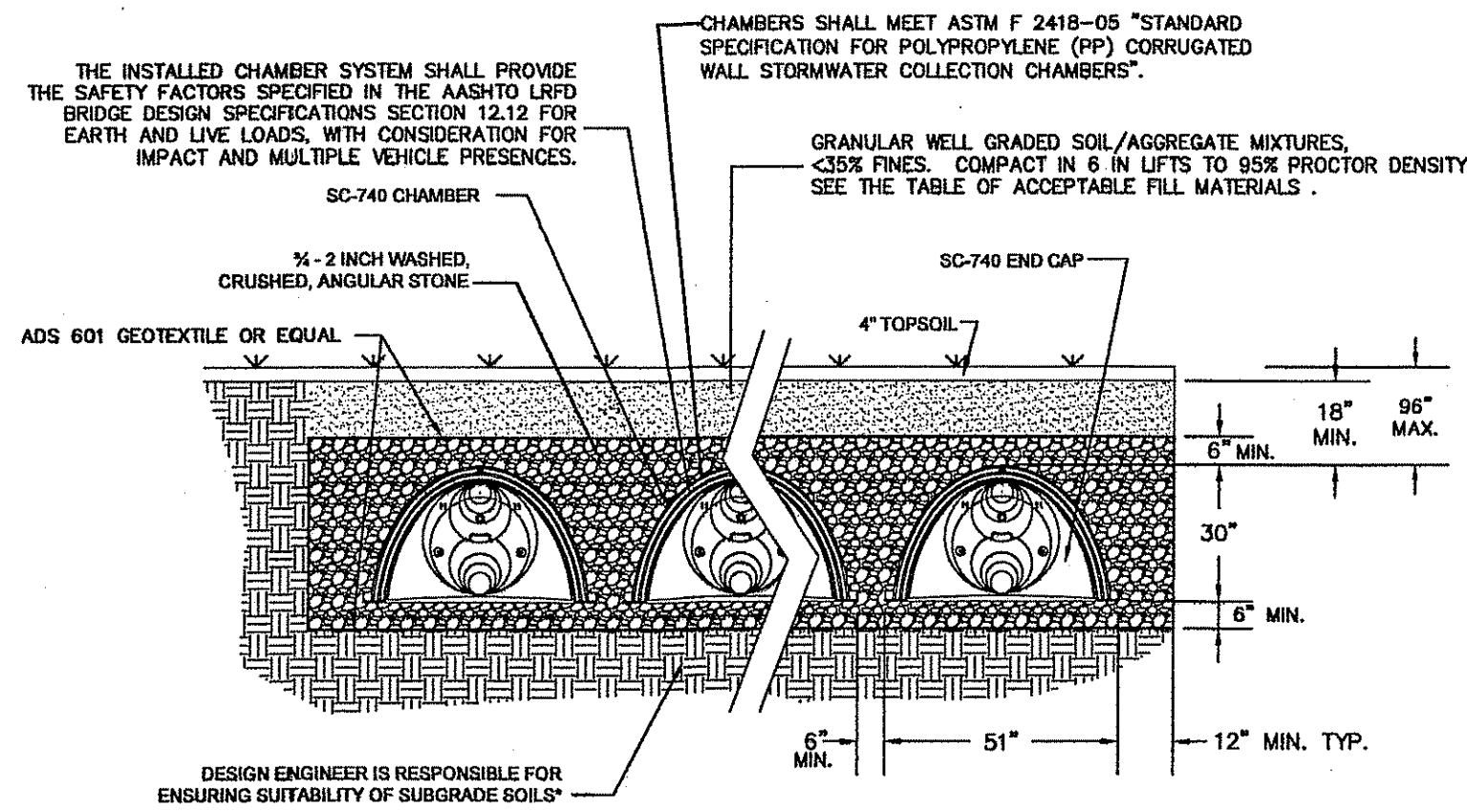
UNDERDRAIN CROSS SECTION
NOT TO SCALE



TYPICAL SECTION A-A

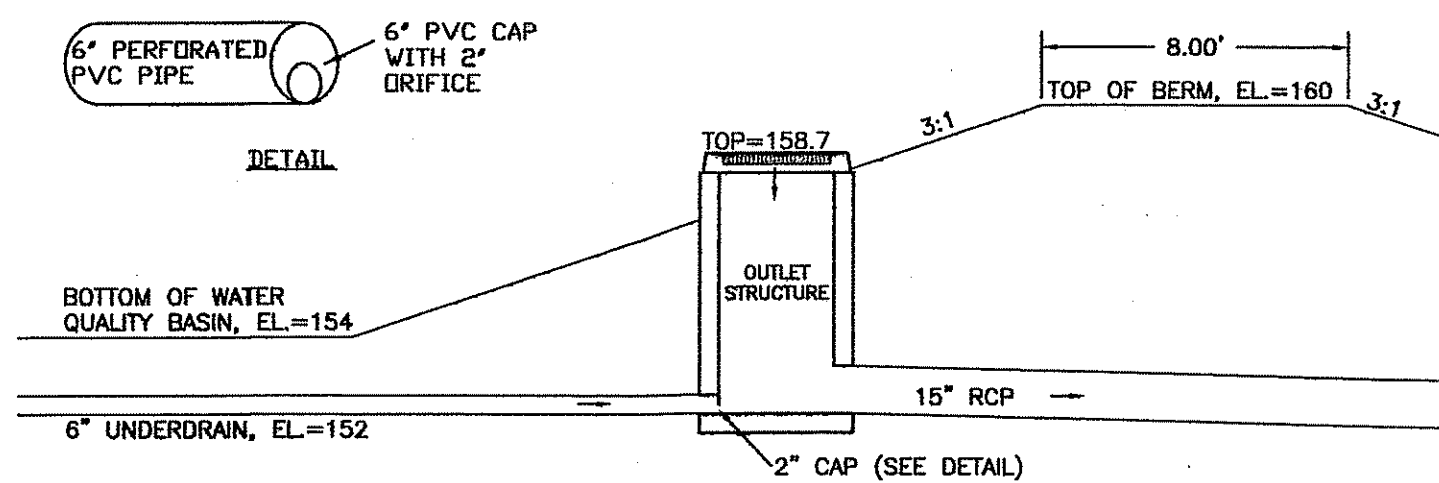
- NOTES:
1.) Level spreaders must be constructed on undisturbed soil (not fill material).
2.) The entrance to the spreader must be shaped in such a manner as to insure that runoff enters directly onto the 0% channel.
3.) The level lip shall be constructed on zero percent grade as to insure uniform spreading of storm runoff.
4.) The released runoff must outlet onto undisturbed stabilized areas in sheet flow and not be allowed to reconcentrate below the structure.
5.) Follow erosion mat manufacturer's recommended installation procedure.
6.) Install topsoil and seed in mat per manufacturer.
7.) Length of spreader as shown on the plans. 30' minimum.

LEVEL SPREADER
NOT TO SCALE

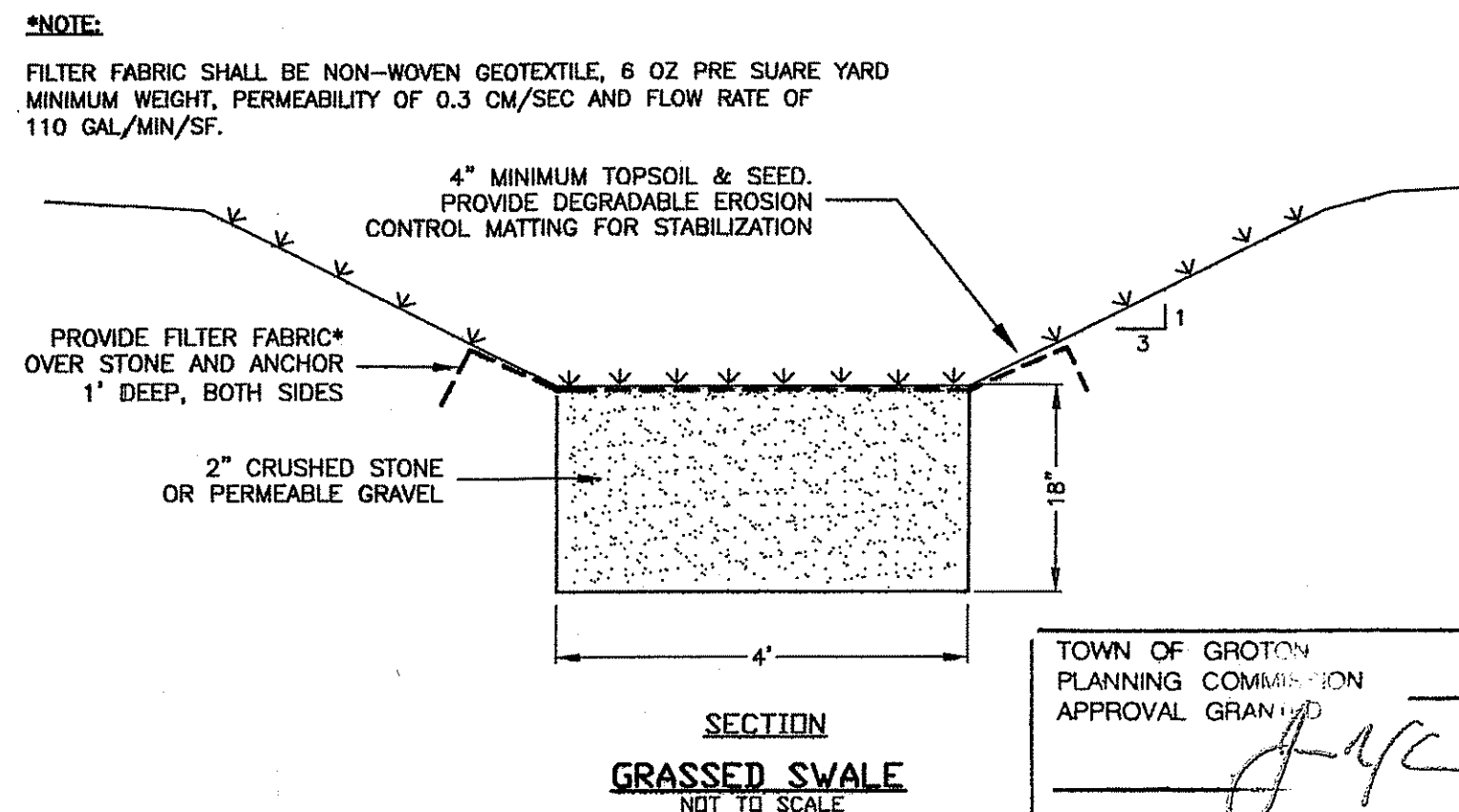


STORMTECH SC-740 CHAMBER SYSTEM
TYPICAL CROSS SECTION

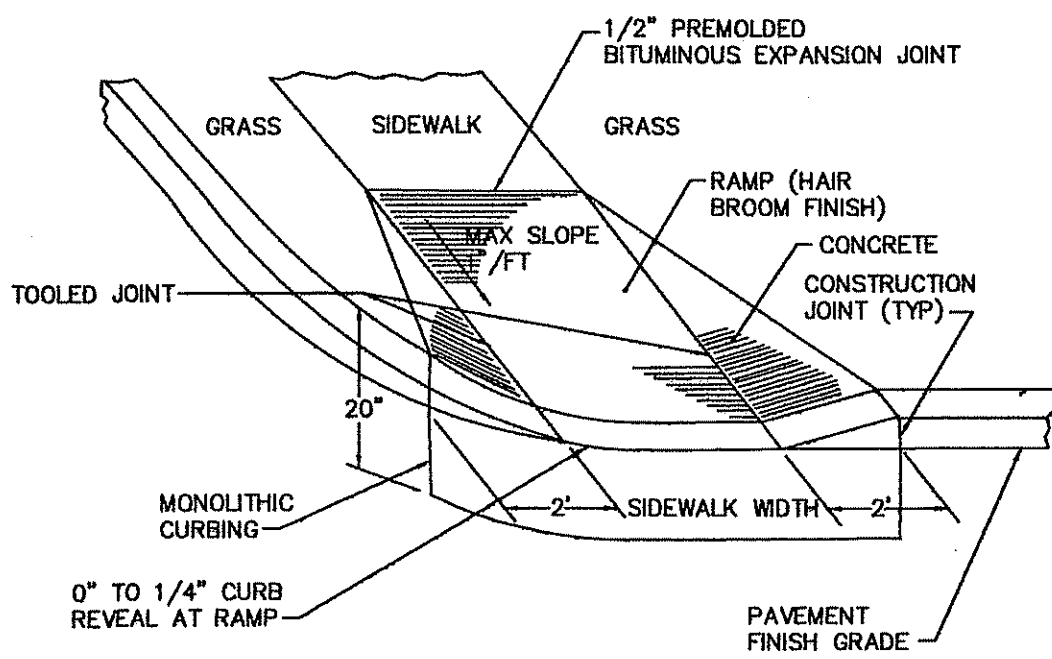
NOTE: 3 UNITS PER DWELLING FOR ROOF DRAINAGE



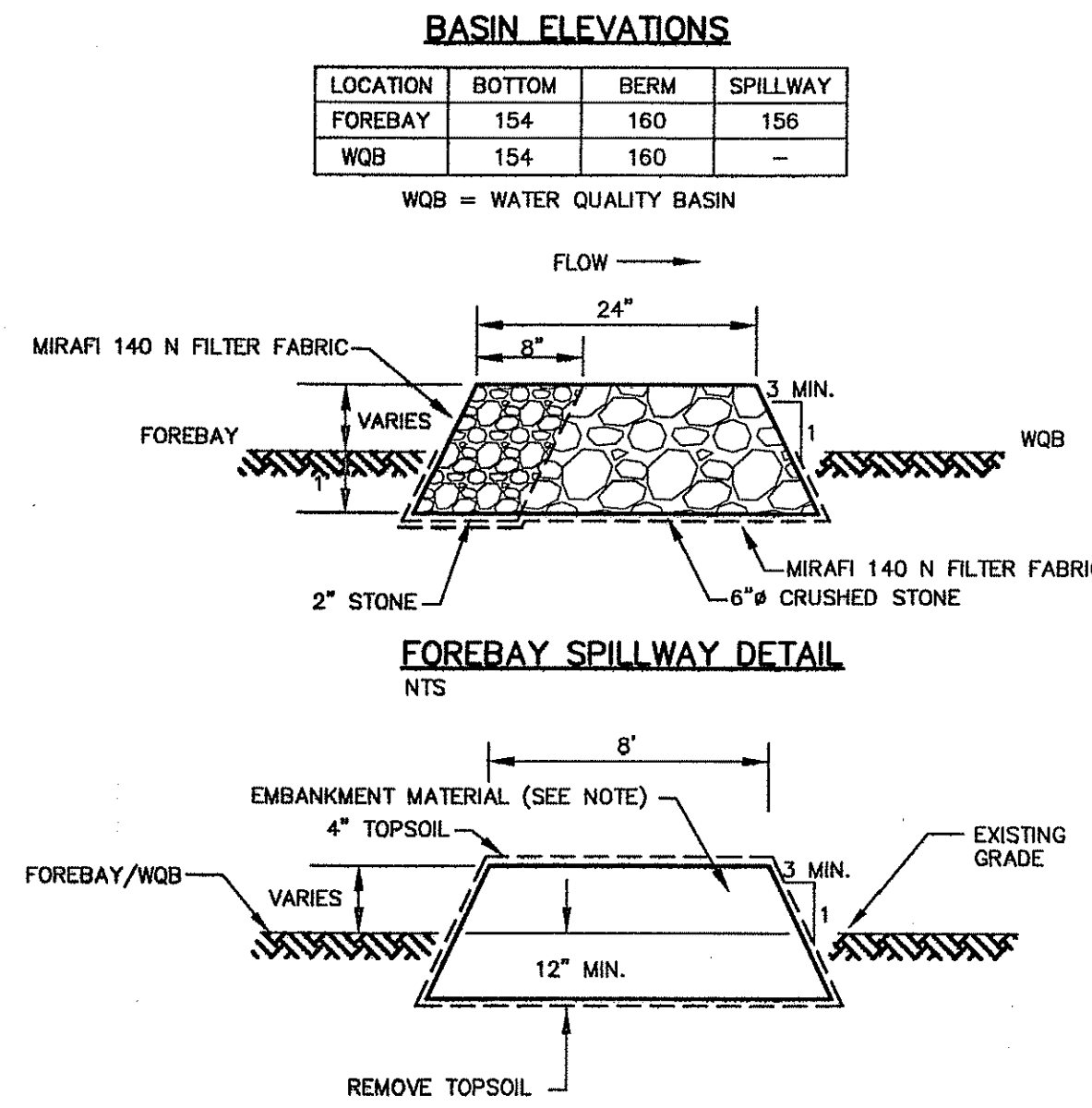
OUTLET STRUCTURE
SCALE: 1"=5'



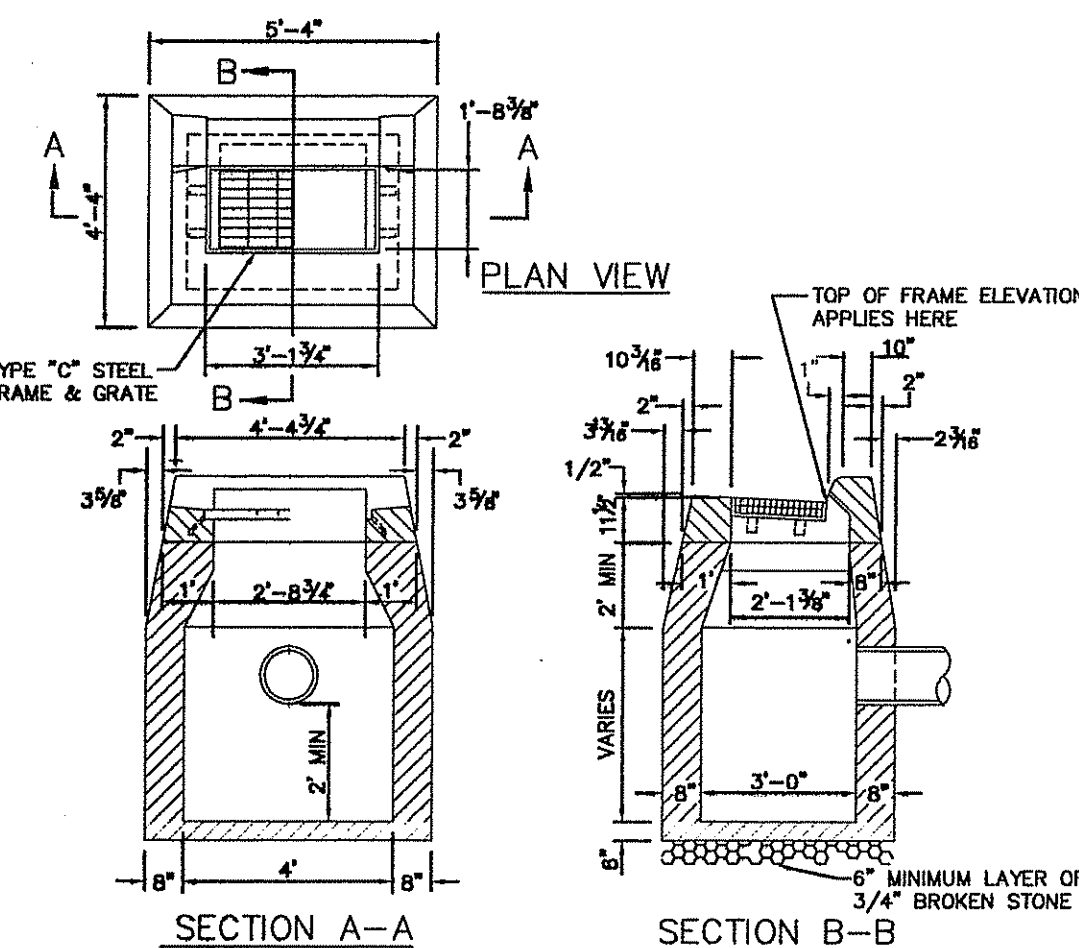
SECTION GRASSED SWALE
NOT TO SCALE



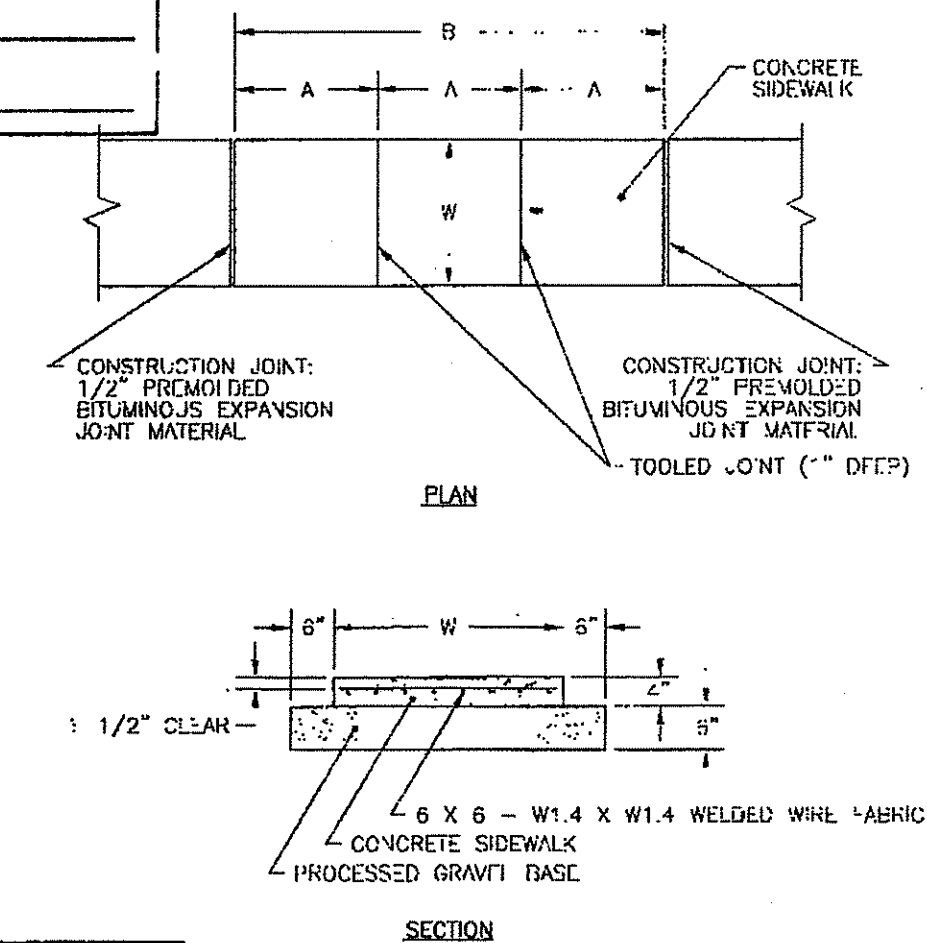
TOWN OF GROTON
TYPE I HANDICAP RAMP
NOT TO SCALE



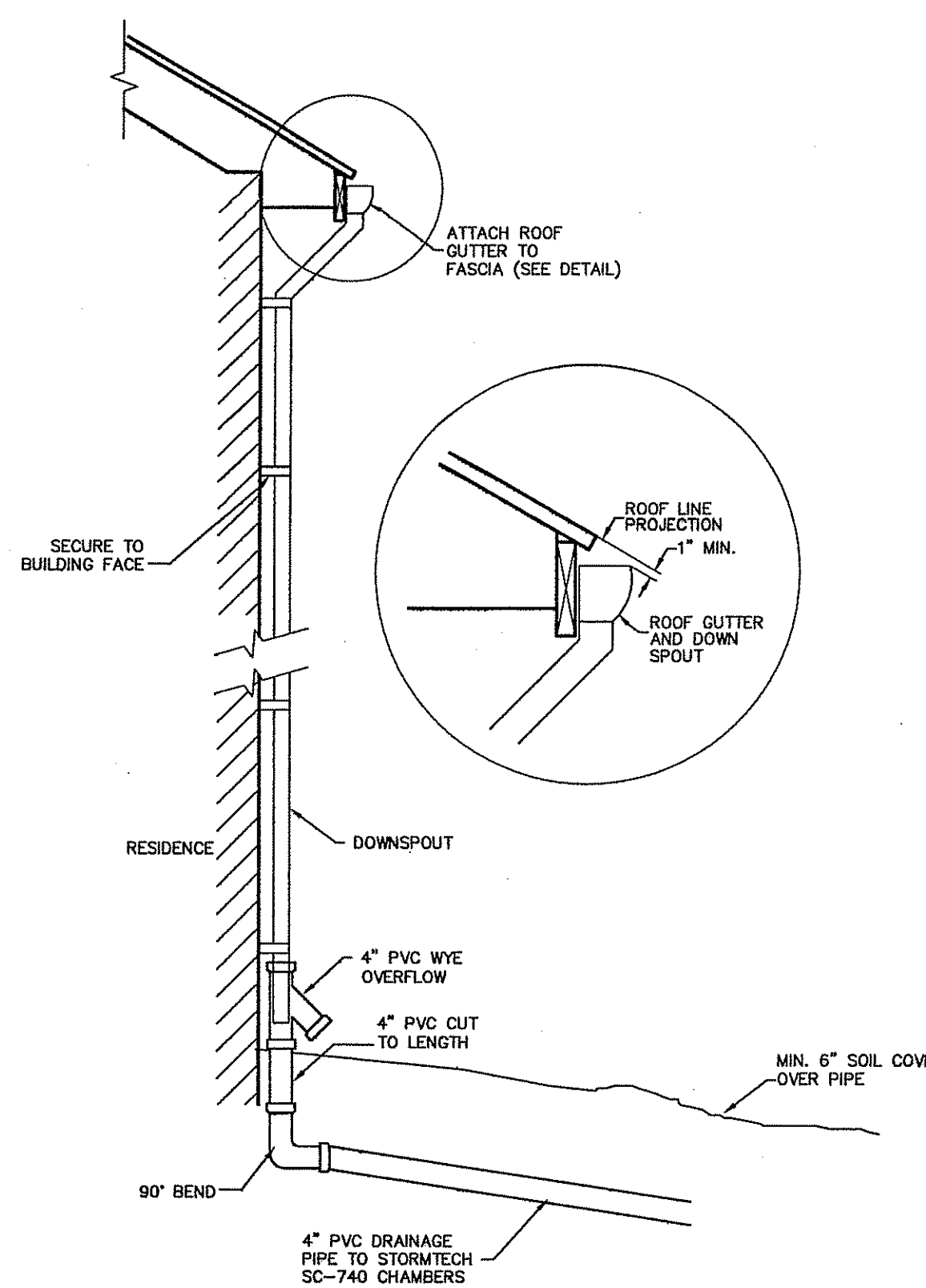
EARTH BERM DETAIL
NTS



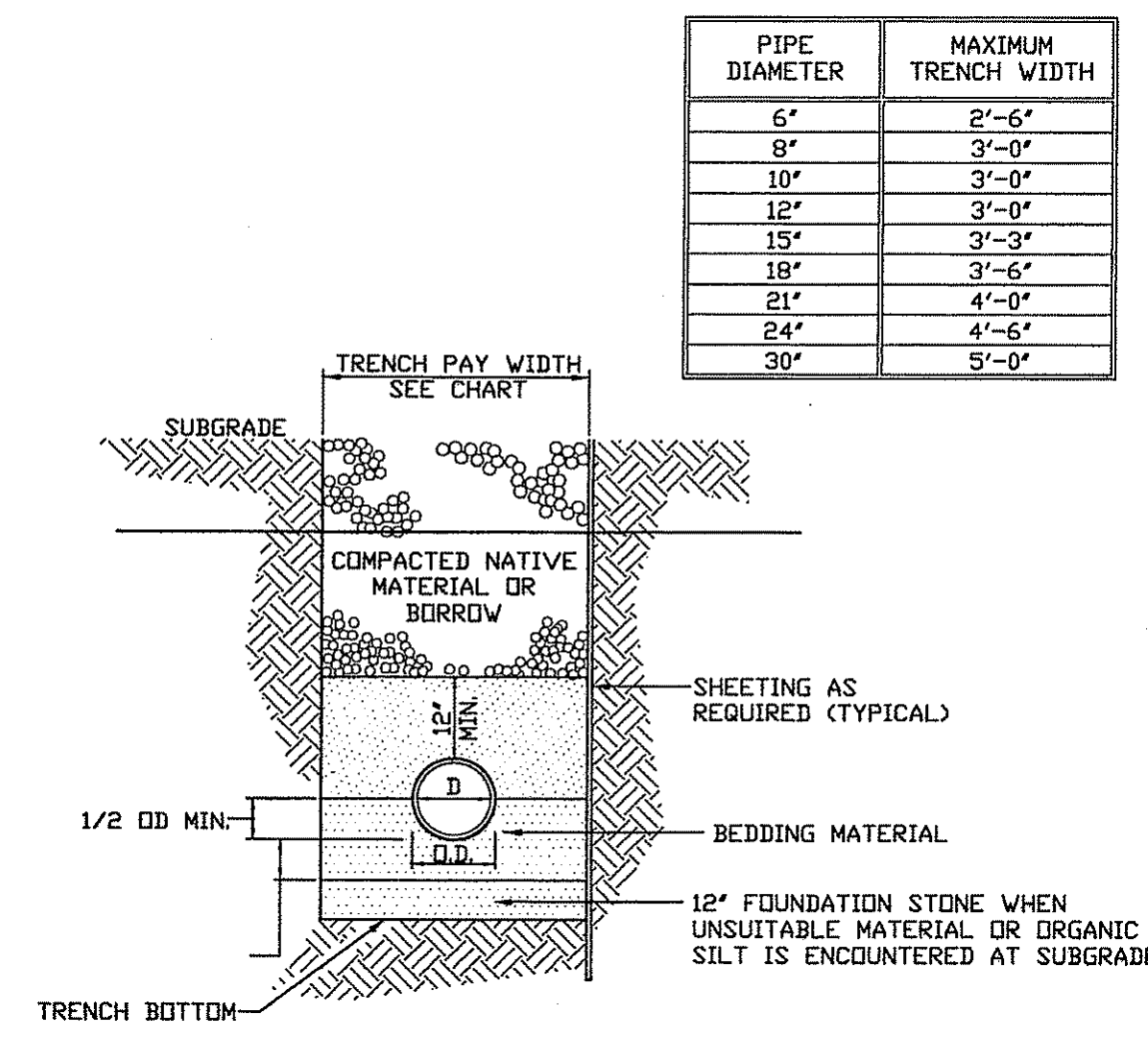
TYPE "C" CATCH BASIN
NOT TO SCALE



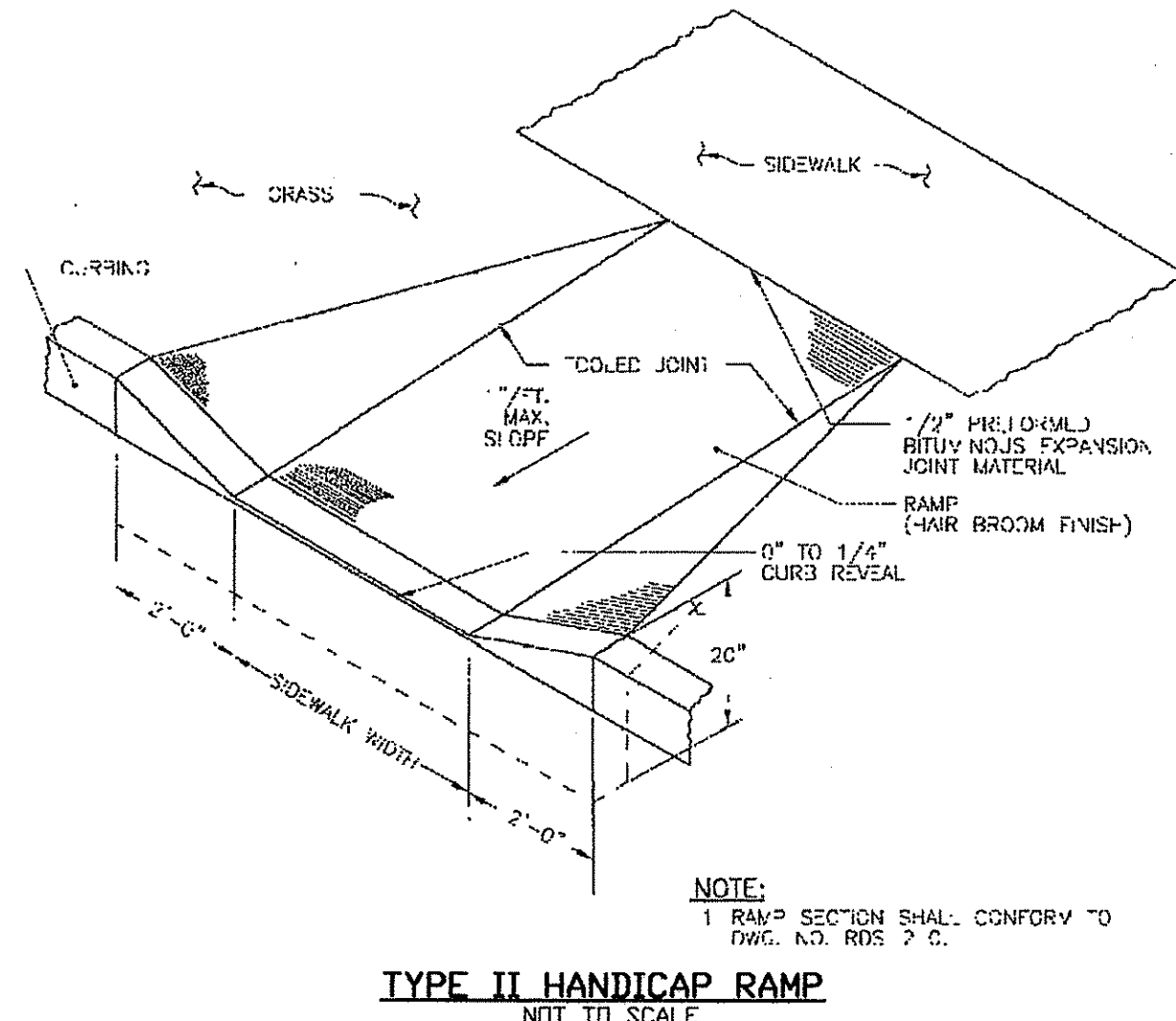
TOWN OF GROTON
CONCRETE SIDEWALK
NOT TO SCALE



ROOF LEADER STORMWATER COLLECTION DETAIL

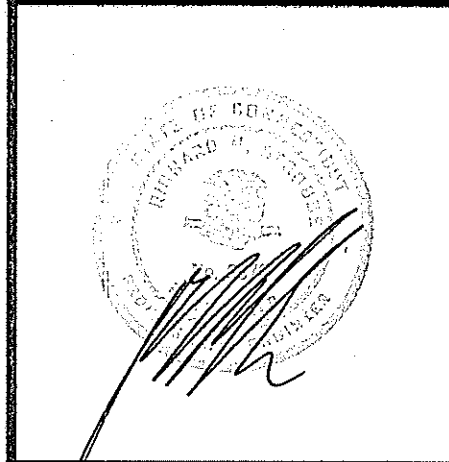


TRENCH SECTION FOR STORM WATER MAINS
NOT TO SCALE



TOWN OF GROTON
TYPE II HANDICAP RAMP
NOT TO SCALE

CME Associates, Inc.
Formerly CHANDLER, PALMER & KING
110 Broadway Norwich, CT 06360
Phone 860-291-9227 Fax 860-888-7801
www.cmeengineering.com



SUBDIVISION PLAN
ZONING DISTRICT RS-12
PREPARED FOR
PEQUOT DEVELOPMENT ASSOCIATES LLC
TOWN OF GROTON, CONNECTICUT

Table with columns for NO., DATE, DESCRIPTION, and REVISIONS. Lists various review stages from 06/07/2006 to 11/02/2007.

DATE: 05/04/2006
SCALE: NOT TO SCALE
SHEET 10 OF 12