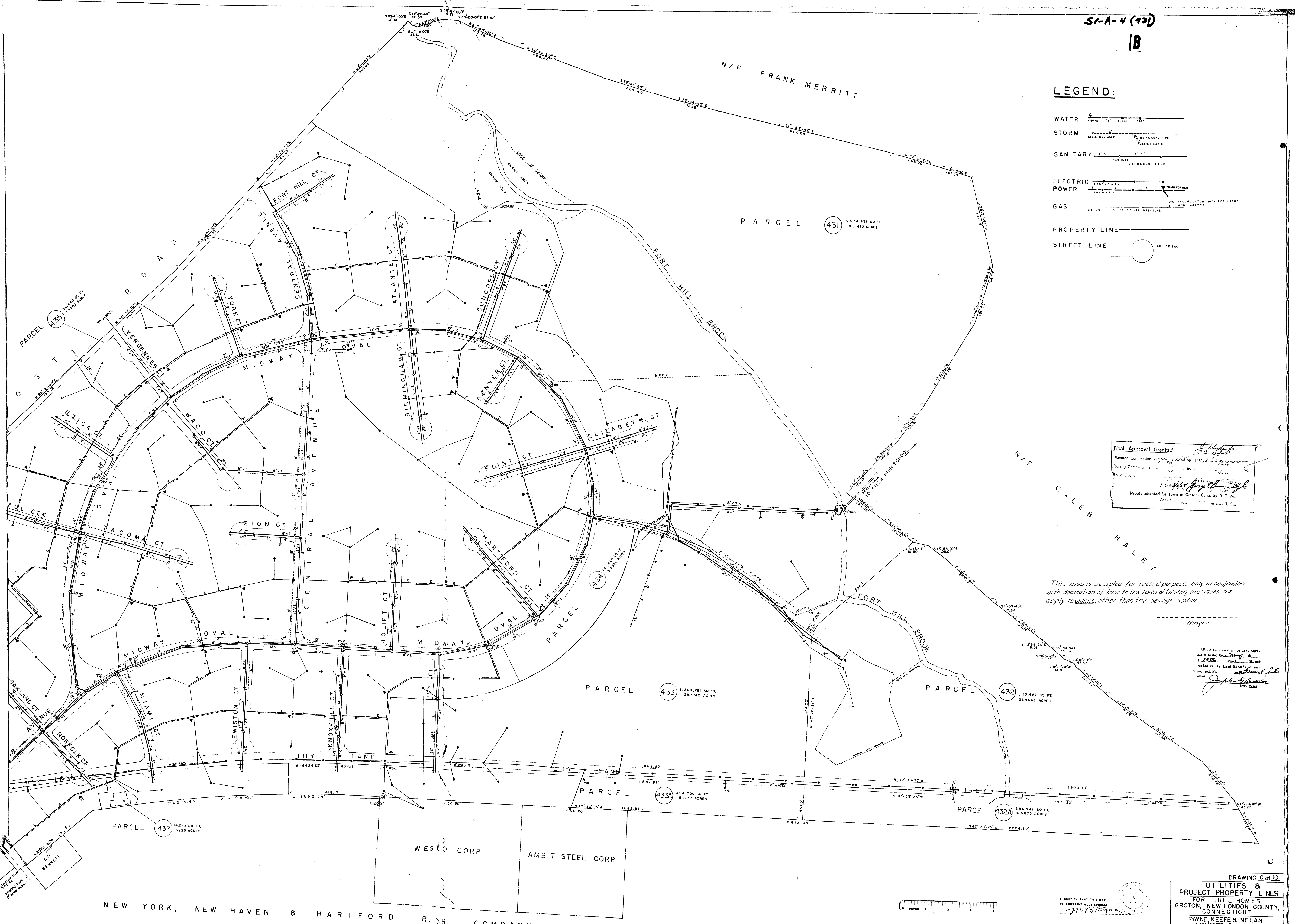


LEGEND:

- WATER
- STORM
- SANITARY
- ELECTRIC POWER
- GAS
- PROPERTY LINE
- STREET LINE

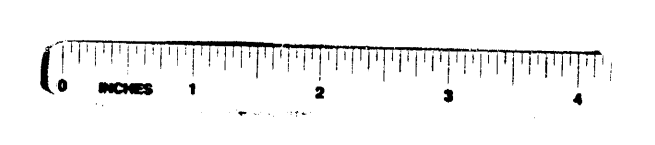


Final Approval Granted
 Planning Commission: _____
 Zoning Commission: _____
 Town Council: _____
 Streets accepted for Town of Groton, Conn. by R. T. M.
 Date: _____

This map is accepted for record purposes only, in conjunction with dedication of land to the Town of Groton, and does not apply to utilities, other than the sewage system.

Mayor

NOTED: This map is accepted for record purposes only, in conjunction with dedication of land to the Town of Groton, and does not apply to utilities, other than the sewage system.
 Date: _____
 Town Clerk



I CERTIFY THAT THIS MAP IS SUBSTANTIALLY CORRECT
 DATE: FEB 19 1958

DRAWING 10 of 10
 UTILITIES & PROJECT PROPERTY LINES
 FORT HILL HOMES
 GROTON, NEW LONDON COUNTY, CONNECTICUT
 PAYNE, KEEFE & NEILAN
 ARCHITECTS - ENGINEERS
 NEW LONDON, CONNECTICUT
 SCALE 1" = 100'
 FEBRUARY 5, 1958 PROJECT CONN. 6018

NEW YORK, NEW HAVEN & HARTFORD R.R. COMPANY